

**nerlynx**<sup>®</sup>  
(neratinib) tablets

# Results of the phase 3 ExteNET trial: a closer look at treatment duration

Descriptive analyses of patients with HER2+ eBC who  
completed treatment with NERLYNX as planned<sup>1,\*</sup>

\* Completion of therapy defined as  $\geq 11$  months of neratinib therapy or ended neratinib therapy after  $< 11$  months due to disease recurrence.<sup>1</sup>

eBC: early-stage breast cancer; HER2+: human epidermal growth factor receptor 2-positive.

**INDICATION:** NERLYNX<sup>®</sup> (neratinib) tablets, for oral use, is a kinase inhibitor indicated:

- As a single agent, for the extended adjuvant treatment of adult patients with early-stage HER2-positive breast cancer, to follow adjuvant trastuzumab-based therapy.

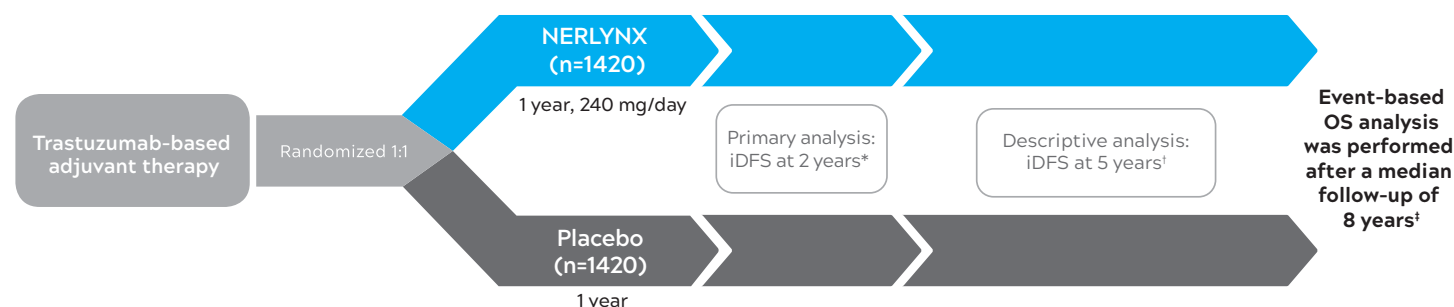
## Select IMPORTANT SAFETY INFORMATION

**Diarrhea:** Manage diarrhea through either NERLYNX dose escalation or loperamide prophylaxis. If diarrhea occurs despite recommended prophylaxis, treat with additional antidiarrheals, fluids, and electrolytes as clinically indicated. Withhold NERLYNX in patients experiencing severe and/or persistent diarrhea. Permanently discontinue NERLYNX in patients experiencing Grade 4 diarrhea or Grade  $\geq 2$  diarrhea that occurs after maximal dose reduction.

Please see additional IMPORTANT SAFETY INFORMATION throughout  
and accompanying Full Prescribing Information.

## ExteNET TRIAL DESIGN

# ExteNET was a phase 3, global, randomized, placebo-controlled study<sup>2-4</sup>



- **Study population:** 2840 women with early-stage (stage I-IIIc) HER2+ breast cancer and locally confirmed hormone receptor status; all patients had prior trastuzumab-based therapy
- **Primary endpoint:** iDFS\*
- **Secondary endpoints:** OS, DFS-DCIS, DDFS, time to distant recurrence, CNS metastases, safety
- **Stratification:** positive nodes (0, 1-3, or 4+), hormone receptor status, concurrent vs sequential trastuzumab-based therapy

### KEY INCLUSION CRITERIA

- Age ≥18 years
- Prior standard locoregional treatment and neoadjuvant/adjuvant chemotherapy plus trastuzumab within 2 years of randomization
- Clinically and radiologically negative for recurrences or metastatic disease

### KEY EXCLUSION CRITERIA

- Patients who achieved a pCR in breast and/or axilla after neoadjuvant therapy
- Patients who had only residual in situ disease in breast and pCR in the axilla after neoadjuvant therapy
- Clinically significant cardiac, gastrointestinal, or psychiatric comorbidities

\* iDFS was defined as the time from randomization to first occurrence of invasive ipsilateral tumor recurrence, invasive contralateral breast cancer, local/regional invasive recurrence, distant recurrence, or death from any cause.<sup>3</sup>

† Results of ExteNET are supported by descriptive analyses after 5 years of follow-up, with 75% of patients (2117/2840) re-consented. 95% of the patients with HER2+ HR+ disease had concomitant endocrine therapy.<sup>2,3</sup>

‡ A definitive analysis of OS was planned when 248 deaths had occurred in the ITT population; median follow-up of 8 years.<sup>3</sup>

CNS: central nervous system; DDFS: distant disease-free survival; DFS-DCIS: disease-free survival including ductal carcinoma in situ; HER2+: human epidermal growth factor receptor 2-positive; HR+: hormone receptor-positive; iDFS: invasive disease-free survival; ITT: intent to treat; OS: overall survival; pCR: pathologic complete response.

## RESULTS FROM ExteNET

# Primary and select secondary endpoint data<sup>5</sup>

PRIMARY ENDPOINT: iDFS in the ITT population (N=2840)\*

**34%** reduction in risk of recurrence at 2 years

(HR=0.66; 95% CI: 0.49-0.90; P=0.008)

**2.3%** absolute benefit in iDFS

- 94.2% with NERLYNX (n=1420; 95% CI: 92.6%-95.4%)
- 91.9% with placebo (n=1420; 95% CI: 90.2%-93.2%)

OS in the ITT population: After a median follow-up of 8 years, there was no statistically significant difference in OS between NERLYNX (n=1420) and placebo (n=1420) (HR=0.95; 95% CI: 0.75-1.21). The 5-year estimate of OS was 94.1% with NERLYNX (95% CI: 92.7%-95.3%) and 93.3% with placebo (95% CI: 91.8%-94.5%)

\* iDFS was defined as the time from randomization to first occurrence of invasive ipsilateral tumor recurrence, invasive contralateral breast cancer, local/regional invasive recurrence, distant recurrence, or death from any cause.<sup>3</sup>  
CI: confidence interval; HR: hazard ratio; iDFS: invasive disease-free survival; ITT: intent to treat; OS: overall survival.

## Select IMPORTANT SAFETY INFORMATION

**Hepatotoxicity:** Monitor liver function tests monthly for the first 3 months of treatment, then every 3 months while on treatment and as clinically indicated. Withhold NERLYNX in patients experiencing Grade 3 liver abnormalities and permanently discontinue NERLYNX in patients experiencing Grade 4 liver abnormalities.

**Embryo-Fetal Toxicity:** NERLYNX can cause fetal harm. Advise patients of potential risk to a fetus and to use effective contraception.

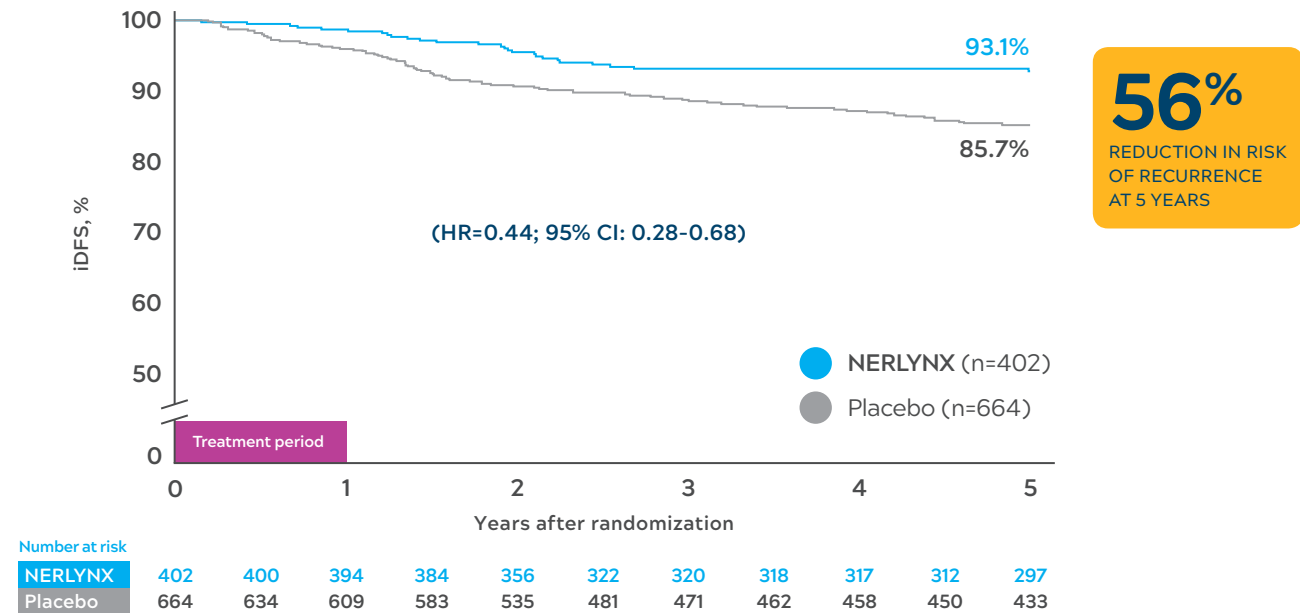
Please see additional IMPORTANT SAFETY INFORMATION throughout and accompanying Full Prescribing Information.

**nerlynx**<sup>®</sup>  
(neratinib) tablets

iDFS DATA IN ExteNET

# iDFS results in the HER2+ HR+ subgroup that completed therapy<sup>1</sup>

DESCRIPTIVE ANALYSIS OF 5-YEAR iDFS IN THE HER2+ HR+ ≤1 YEAR POST-TRASTUZUMAB SUBGROUP THAT COMPLETED THERAPY (n=1066)\*,†,‡



7.4% absolute benefit in iDFS at 5 years

## Descriptive analysis, not prespecified or powered.<sup>1</sup>

\* Completion of therapy defined as ≥11 months of neratinib therapy or ended neratinib therapy after <11 months due to disease recurrence.<sup>1</sup>

† Subgroup of patients with HR+ disease randomized to NERLYNX ≤1 year after completing prior trastuzumab-based therapy.<sup>1</sup>

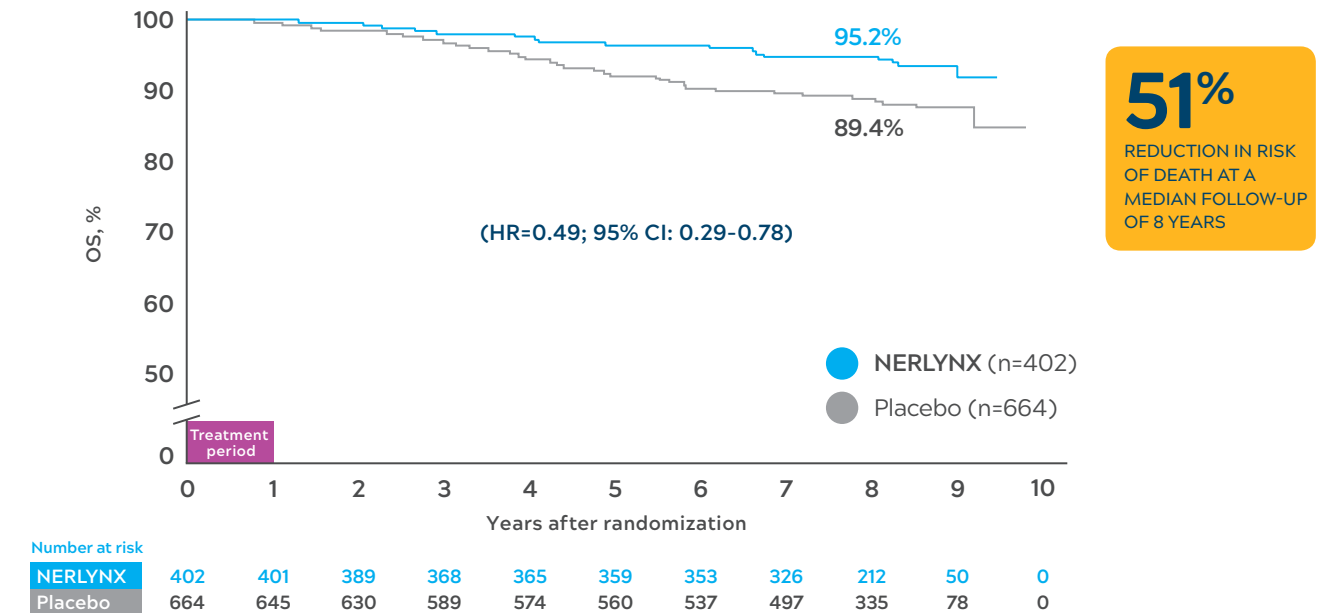
‡ Results of ExteNET are supported by descriptive analyses after 5 years of follow-up, with 75% of patients (2117/2840) reconsented. 95% of the patients with HER2+ HR+ disease had concomitant endocrine therapy.<sup>1,2</sup>

CI: confidence interval; HER2+: human epidermal growth factor receptor 2-positive; HR: hazard ratio; HR+: hormone receptor-positive; iDFS: invasive disease-free survival.

OS DATA IN ExteNET

# OS results in the HER2+ HR+ subgroup that completed therapy<sup>1</sup>

DESCRIPTIVE ANALYSIS OF 8-YEAR OS IN THE HER2+ HR+ ≤1 YEAR POST-TRASTUZUMAB SUBGROUP THAT COMPLETED THERAPY (n=1066)\*,†,‡



5.8% absolute benefit in OS at 8 years

## Descriptive analysis, not prespecified or powered.<sup>1</sup>

\* Completion of therapy defined as ≥11 months of neratinib therapy or ended neratinib therapy after <11 months due to disease recurrence.<sup>1</sup>

† Subgroup of patients with HR+ disease randomized to NERLYNX ≤1 year after completing prior trastuzumab-based therapy.<sup>1</sup>

‡ Results of ExteNET are supported by descriptive analyses after 5 years of follow-up, with 75% of patients (2117/2840) reconsented. 95% of the patients with HER2+ HR+ disease had concomitant endocrine therapy.<sup>1,2</sup>

CI: confidence interval; HER2+: human epidermal growth factor receptor 2-positive; HR: hazard ratio; HR+: hormone receptor-positive; OS: overall survival.

## Select IMPORTANT SAFETY INFORMATION

**ADVERSE REACTIONS:** The most common adverse reactions (reported in ≥5% of patients) were:

- NERLYNX as a single agent: diarrhea, nausea, abdominal pain, fatigue, vomiting, rash, stomatitis, decreased appetite, muscle spasms, dyspepsia, AST or ALT increased, nail disorder, dry skin, abdominal distention, epistaxis, weight decreased, and urinary tract infection.

Please see additional IMPORTANT SAFETY INFORMATION throughout and accompanying Full Prescribing Information.



# NERLYNX safety profile for HER2+ eBC<sup>5</sup>

MOST COMMON ADVERSE REACTIONS (≥5%)	NERLYNX (n=1408)		Placebo (n=1408)	
	All grades, %	Grades ≥3, %	All grades, %	Grades ≥3, %
Diarrhea	95	40 (Grade 3) 0.1 (Grade 4)	35	2
Nausea	43	2	22	0.1
Abdominal pain*	36	2	15	0.4
Fatigue	27	2	20	0.4
Vomiting	26	3	8	0.4
Rash†	18	0.6	9	0
Stomatitis‡	14	0.6	6	0.1
Decreased appetite	12	0.2	3	0
Muscle spasms	11	0.1	3	0.1
Dyspepsia	10	0.4	4	0
ALT increased	9	1 (Grade 3) 0.2 (Grade 4)	3	0.2
Nail disorder§	8	0.3	2	0
AST increased	7	0.5 (Grade 3) 0.2 (Grade 4)	3	0.3
Dry skin	6	0	2	0
Abdominal distention	5	0.3	3	0
Epistaxis	5	0	1	0.1
Weight decreased	5	0.1	0.5	0
Urinary tract infection	5	0.1	2	0

The USPI warnings and precautions do not include cardiac, pulmonary, or hematologic toxicities, or increased risk for secondary malignancy.

\* Includes abdominal pain, abdominal pain upper, and abdominal pain lower.

† Includes rash, rash erythematous, rash follicular, rash generalized, rash pruritic, rash pustular, rash maculo-papular, rash papular, dermatitis, dermatitis acneiform, and toxic skin eruption.

‡ Includes stomatitis, aphthous stomatitis, mouth ulceration, oral mucosal blistering, mucosal inflammation, oropharyngeal pain, oral pain, glossodynia, glossitis, and cheilitis.

§ Includes nail disorder, paronychia, onychoclasia, nail discoloration, nail toxicity, nail growth abnormal, and nail dystrophy.

ALT: alanine transaminase; AST: aspartate transaminase; eBC: early-stage breast cancer; HER2+: human epidermal growth factor receptor 2-positive.

Please see additional IMPORTANT SAFETY INFORMATION throughout and accompanying Full Prescribing Information.

## Indication and Important Safety Information

**INDICATION:** NERLYNX® (neratinib) tablets, for oral use, is a kinase inhibitor indicated:

- As a single agent, for the extended adjuvant treatment of adult patients with early-stage HER2-positive breast cancer, to follow adjuvant trastuzumab-based therapy.

### IMPORTANT SAFETY INFORMATION

**CONTRAINDICATIONS:** None

**WARNINGS AND PRECAUTIONS:**

- **Diarrhea:** Manage diarrhea through either NERLYNX dose escalation or loperamide prophylaxis. If diarrhea occurs despite recommended prophylaxis, treat with additional antidiarrheals, fluids, and electrolytes as clinically indicated. Withhold NERLYNX in patients experiencing severe and/or persistent diarrhea. Permanently discontinue NERLYNX in patients experiencing Grade 4 diarrhea or Grade ≥2 diarrhea that occurs after maximal dose reduction.
- **Hepatotoxicity:** Monitor liver function tests monthly for the first 3 months of treatment, then every 3 months while on treatment and as clinically indicated. Withhold NERLYNX in patients experiencing Grade 3 liver abnormalities and permanently discontinue NERLYNX in patients experiencing Grade 4 liver abnormalities.
- **Embryo-Fetal Toxicity:** NERLYNX can cause fetal harm. Advise patients of potential risk to a fetus and to use effective contraception.

**ADVERSE REACTIONS:** The most common adverse reactions (reported in ≥5% of patients) were:

- NERLYNX as a single agent: diarrhea, nausea, abdominal pain, fatigue, vomiting, rash, stomatitis, decreased appetite, muscle spasms, dyspepsia, AST or ALT increased, nail disorder, dry skin, abdominal distention, epistaxis, weight decreased, and urinary tract infection.

To report SUSPECTED ADVERSE REACTIONS, contact Puma Biotechnology, Inc. at 1-844-NERLYNX (1-844-637-5969) or FDA at 1-800-FDA-1088 or [www.fda.gov/medwatch](http://www.fda.gov/medwatch).

**DRUG INTERACTIONS:**

- Gastric acid reducing agents: Avoid concomitant use with proton pump inhibitors. Separate NERLYNX by at least 2 hours before or 10 hours after H<sub>2</sub>-receptor antagonists. Or separate NERLYNX by at least 3 hours after antacids.
- Strong CYP3A4 inhibitors: Avoid concomitant use.
- P-gp and moderate CYP3A4 dual inhibitors: Avoid concomitant use.
- Strong or moderate CYP3A4 inducers: Avoid concomitant use.
- Certain P-gp substrates: Monitor for adverse reactions of P-gp substrates for which minimal concentration change may lead to serious adverse reactions when used concomitantly with NERLYNX.

**USE IN SPECIFIC POPULATIONS:**

- **Lactation:** Advise women not to breastfeed.

Please see accompanying Full Prescribing Information.

# nerlynx<sup>®</sup>

(neratinib) tablets



Learn more at [nerlynxHCP.com](https://nerlynxHCP.com)

**References:** 1. Moy B, Takahashi M, Ohtani S, et al. Association between treatment duration and overall survival in early-stage HER2+ breast cancer patients receiving extended adjuvant therapy with neratinib in the ExteNET trial. Presented at the 2021 ASCO Annual Meeting, June 4-8, 2021. 2. Martin M, Holmes FA, Ejlertsen B, et al; ExteNET Study Group. Neratinib after trastuzumab-based adjuvant therapy in HER2-positive breast cancer (ExteNET): 5-year analysis of a randomised, double-blind, placebo-controlled, phase 3 trial. *Lancet Oncol*. 2017;18(12):1688-1700. doi:10.1016/S1470-2045(17)30717-9 3. Chan A, Moy B, Mansi J, et al; ExteNET Study Group. Final efficacy results of neratinib in HER2-positive hormone receptor-positive early-stage breast cancer from the phase III ExteNET trial. *Clin Breast Cancer*. 2021;21(1):80-91. doi:10.1016/j.clbc.2020.09.014 4. Puma Biotechnology, Inc. Data on file. 5. NERLYNX [package insert]. Los Angeles, CA: Puma Biotechnology, Inc.

## HIGHLIGHTS OF PRESCRIBING INFORMATION

These highlights do not include all the information needed to use NERLYNX safely and effectively. See full prescribing information for NERLYNX.

NERLYNX® (neratinib) tablets, for oral use

Initial U.S. Approval: 2017

### RECENT MAJOR CHANGES

Dosage and Administration, Premedication for Diarrhea (2.1)	06/2021
Dosage and Administration, Recommended Dose and Schedule (2.2)	06/2021
Dosage and Administration, Dose Modifications (2.3)	06/2021
Warnings and Precautions, Diarrhea (5.1)	06/2021

### INDICATIONS AND USAGE

NERLYNX is a kinase inhibitor indicated:

- As a single agent, for the extended adjuvant treatment of adult patients with early-stage HER2-positive breast cancer, to follow adjuvant trastuzumab-based therapy. (1.1)
- In combination with capecitabine, for the treatment of adult patients with advanced or metastatic HER2-positive breast cancer who have received two or more prior anti-HER2 based regimens in the metastatic setting. (1.2)

### DOSAGE AND ADMINISTRATION

- Premedication for diarrhea: When not using dose escalation, initiate loperamide with the first dose of NERLYNX and continue during the first 56 days of treatment. After day 56, use loperamide to maintain 1–2 bowel movements per day. (2.1, 2.2)
- Extended adjuvant treatment of early-stage breast cancer: 240 mg (6 tablets) given orally once daily, with food, continuously until disease recurrence for up to one year. (2.2)
- Advanced or metastatic breast cancer: 240 mg (6 tablets) given orally once daily with food on Days 1–21 of a 21-day cycle plus capecitabine (750 mg/m<sup>2</sup> given orally twice daily) on Days 1–14 of a 21-day cycle until disease progression or unacceptable toxicities. (2.2)
- Dose escalation: A two-week dose escalation for NERLYNX may also be initiated. (2.2)
- Dose interruptions and/or dose reductions are recommended based on individual safety and tolerability. (2.3)
- Hepatic impairment: Reduce starting dose to 80 mg in patients with severe hepatic impairment. (2.4)

### DOSAGE FORMS AND STRENGTHS

Tablets: 40 mg. (3)

### CONTRAINDICATIONS

None. (4)

### WARNINGS AND PRECAUTIONS

- Diarrhea: Manage diarrhea through either NERLYNX dose escalation or loperamide prophylaxis (2.1, 2.2). If diarrhea occurs despite recommended prophylaxis, treat with additional antidiarrheals, fluids, and electrolytes as clinically indicated. Withhold NERLYNX in patients experiencing severe and/or persistent diarrhea. Permanently discontinue NERLYNX in patients experiencing Grade 4 diarrhea or Grade  $\geq 2$  diarrhea that occurs after maximal dose reduction. (2.3, 5.1)
- Hepatotoxicity: Monitor liver function tests monthly for the first 3 months of treatment, then every 3 months while on treatment and as clinically indicated. Withhold NERLYNX in patients experiencing Grade 3 liver abnormalities and permanently discontinue NERLYNX in patients experiencing Grade 4 liver abnormalities. (2.3, 5.2)
- Embryo-Fetal Toxicity: NERLYNX can cause fetal harm. Advise patients of potential risk to a fetus and to use effective contraception. (5.3, 8.1, 8.3)

### ADVERSE REACTIONS

The most common adverse reactions (reported in  $\geq 5\%$  of patients) were:

- NERLYNX as a single agent: diarrhea, nausea, abdominal pain, fatigue, vomiting, rash, stomatitis, decreased appetite, muscle spasms, dyspepsia, AST or ALT increased, nail disorder, dry skin, abdominal distention, epistaxis, weight decreased, and urinary tract infection. (6)
- NERLYNX in combination with capecitabine: diarrhea, nausea, vomiting, decreased appetite, constipation, fatigue/asthenia, weight decreased, dizziness, back pain, arthralgia, urinary tract infection, upper respiratory tract infection, abdominal distention, renal impairment, and muscle spasms. (6)

To report SUSPECTED ADVERSE REACTIONS, contact Puma Biotechnology, Inc. at 1-844-NERLYNX (1-844-637-5969) or FDA at 1-800-FDA-1088 or [www.fda.gov/medwatch](http://www.fda.gov/medwatch).

### DRUG INTERACTIONS

- Gastric acid reducing agents: Avoid concomitant use with proton pump inhibitors. Separate NERLYNX by at least 2 hours before or 10 hours after H<sub>2</sub>-receptor antagonists. Or separate NERLYNX by at least 3 hours after antacids. (2.5, 7.1)
- Strong CYP3A4 inhibitors: Avoid concomitant use. (7.1)
- P-gp and moderate CYP3A4 dual inhibitors: Avoid concomitant use. (7.1)
- Strong or moderate CYP3A4 inducers: Avoid concomitant use. (7.1)
- Certain P-gp substrates: Monitor for adverse reactions of P-gp substrates for which minimal concentration change may lead to serious adverse reactions when used concomitantly with NERLYNX. (7.2)

### USE IN SPECIFIC POPULATIONS

Lactation: Advise women not to breastfeed. (8.2)

See 17 for PATIENT COUNSELING INFORMATION and FDA-approved patient labeling.

Revised: 03/2022

## FULL PRESCRIBING INFORMATION: CONTENTS\*

### 1 INDICATIONS AND USAGE

- 1.1 Extended Adjuvant Treatment of Early-Stage Breast Cancer
- 1.2 Advanced or Metastatic Breast Cancer

### 2 DOSAGE AND ADMINISTRATION

- 2.1 Premedication for Diarrhea
- 2.2 Recommended Dose and Schedule
- 2.3 Dosage Modifications for Adverse Reactions
- 2.4 Dosage Modifications for Hepatic Impairment
- 2.5 Dosage Modifications for Gastric Acid Reducing Agents

### 3 DOSAGE FORMS AND STRENGTHS

### 4 CONTRAINDICATIONS

### 5 WARNINGS AND PRECAUTIONS

- 5.1 Diarrhea
- 5.2 Hepatotoxicity
- 5.3 Embryo-Fetal Toxicity

### 6 ADVERSE REACTIONS

- 6.1 Clinical Trials Experience

### 7 DRUG INTERACTIONS

- 7.1 Effect of Other Drugs on NERLYNX
- 7.2 Effect of NERLYNX on Other Drugs

### 8 USE IN SPECIFIC POPULATIONS

- 8.1 Pregnancy

### 8.2 Lactation

### 8.3 Females and Males of Reproductive Potential

### 8.4 Pediatric Use

### 8.5 Geriatric Use

### 8.6 Hepatic Impairment

### 10 OVERDOSAGE

### 11 DESCRIPTION

### 12 CLINICAL PHARMACOLOGY

#### 12.1 Mechanism of Action

#### 12.2 Pharmacodynamics

#### 12.3 Pharmacokinetics

### 13 NONCLINICAL TOXICOLOGY

#### 13.1 Carcinogenesis, Mutagenesis, Impairment of Fertility

### 14 CLINICAL STUDIES

#### 14.1 Extended Adjuvant Treatment of Early-Stage Breast Cancer

#### 14.2 Advanced or Metastatic Breast Cancer

### 16 HOW SUPPLIED/STORAGE AND HANDLING

### 17 PATIENT COUNSELING INFORMATION

\*Sections or subsections omitted from the full prescribing information are not listed.

# FULL PRESCRIBING INFORMATION

## 1 INDICATIONS AND USAGE

### 1.1 Extended Adjuvant Treatment of Early-Stage Breast Cancer

NERLYNX as a single agent is indicated for the extended adjuvant treatment of adult patients with early-stage human epidermal growth factor receptor 2 (HER2)-positive breast cancer, to follow adjuvant trastuzumab based therapy [see *Clinical Studies (14.1)*].

### 1.2 Advanced or Metastatic Breast Cancer

NERLYNX in combination with capecitabine is indicated for the treatment of adult patients with advanced or metastatic HER2-positive breast cancer who have received two or more prior anti-HER2 based regimens in the metastatic setting [see *Clinical Studies (14.2)*].

## 2 DOSAGE AND ADMINISTRATION

### 2.1 Premedication for Diarrhea

When not using dose escalation [see *Dosage and Administration (2.2)*], administer antidiarrheal prophylaxis during the first 56 days of treatment and initiate with the first dose of NERLYNX [see *Warnings and Precautions (5.1)* and *Adverse Reactions (6.1)*].

Instruct patients to take loperamide as directed in Table 1. Titrate loperamide to 1–2 bowel movements per day.

**Table 1: Loperamide Prophylaxis**

Time on NERLYNX	Loperamide Dose and Frequency
Weeks 1–2 (days 1–14)	4 mg three times daily
Weeks 3–8 (days 15–56)	4 mg twice daily
Weeks 9–Discontinuation of NERLYNX	4 mg as needed, not to exceed 16 mg per day; titrate dosing to achieve 1–2 bowel movements per day

If diarrhea occurs despite prophylaxis, treat with additional antidiarrheals, fluids and electrolytes as clinically indicated. NERLYNX dose interruptions and dose reductions may also be required to manage diarrhea [see *Dosage and Administration (2.3)*].

### 2.2 Recommended Dose and Schedule

#### Extended Adjuvant Treatment of Early-Stage Breast Cancer

The recommended dose of NERLYNX is 240 mg (six tablets) given orally once daily, with food, continuously until disease recurrence or for up to one year.

#### Advanced or Metastatic Breast Cancer

The recommended dose of NERLYNX is 240 mg (six tablets) given orally once daily with food on Days 1–21 of a 21-day cycle plus capecitabine (750 mg/m<sup>2</sup> given orally twice daily) on Days 1–14 of a 21-day cycle until disease progression or unacceptable toxicities.

## Dose Escalation

A two-week dose escalation for NERLYNX may be considered instead of starting at the 240 mg daily dose for patients with early-stage breast cancer and metastatic breast cancer, as described in Table 2 [*see Warnings and Precautions (5.1) and Adverse Reactions (6.1)*].

**Table 2: NERLYNX Dose Escalation and Treatment Schedule**

<b>Time on NERLYNX</b>	<b>NERLYNX Dose</b>
Week 1 (days 1–7)	120 mg daily (three 40 mg tablets)
Week 2 (days 8–14)	160 mg daily (four 40 mg tablets)
Week 3 and onwards	240 mg daily (six 40 mg tablets, recommended dose)

If diarrhea occurs, treat with antidiarrheal medications, fluids, and electrolytes as clinically indicated. NERLYNX dose interruptions and dose reductions may also be required to manage diarrhea [*see Dosage and Administration (2.3)*].

## Administration Instructions

Instruct patients to take NERLYNX at approximately the same time every day. NERLYNX tablets should be swallowed whole (tablets should not be chewed, crushed, or split prior to swallowing).

If a patient misses a dose, do not replace missed dose, and instruct the patient to resume NERLYNX with the next scheduled daily dose.

## **2.3 Dosage Modifications for Adverse Reactions**

NERLYNX dose modification is recommended based on individual safety and tolerability. Management of some adverse reactions may require dose interruption and/or dose reduction as shown in Table 3 to Table 6.

Discontinue NERLYNX for patients with adverse reactions that fail to recover to Grade 0–1 or baseline, with toxicities that result in a treatment delay >3 weeks, or if unable to tolerate 120 mg daily. Additional clinical situations may result in dose adjustments as clinically indicated (e.g., intolerable toxicities, persistent Grade 2 adverse reactions, etc.).

When NERLYNX is used in combination with capecitabine, refer to the capecitabine prescribing information for dose modifications of capecitabine.

**Table 3: NERLYNX Monotherapy Dose Modifications for Adverse Reactions**

<b>Dose Level</b>	<b>NERLYNX Dose</b>
Recommended starting dose	240 mg daily (six 40 mg tablets)
First dose reduction	200 mg daily (five 40 mg tablets)
Second dose reduction	160 mg daily (four 40 mg tablets)
Third dose reduction	120 mg daily (three 40 mg tablets)



**Table 4: Recommended Dosage Modifications for Adverse Reactions with NERLYNX Monotherapy**

Adverse Reaction	Severity <sup>†</sup>	Action/Dose Modification
Diarrhea <i>[see Warnings and Precautions (5.1)]</i>	<ul style="list-style-type: none"> <li>• Grade 1 diarrhea [increase of &lt;4 stools per day over baseline]</li> <li>• Grade 2 diarrhea [increase of 4–6 stools per day over baseline] lasting ≤5 days</li> <li>• Grade 3 diarrhea [increase of ≥7 stools per day over baseline; incontinence; hospitalization indicated; limiting self-care activities of daily living] lasting ≤2 days</li> </ul>	<ul style="list-style-type: none"> <li>• Adjust antidiarrheal treatment</li> <li>• Diet modifications</li> <li>• Fluid intake of ~2 L/day should be maintained to avoid dehydration</li> <li>• Once event resolves to ≤Grade 1 or baseline, start loperamide 4 mg with each subsequent NERLYNX administration</li> </ul>
	<ul style="list-style-type: none"> <li>• Any grade with complicated features*</li> <li>• Grade 2 diarrhea lasting longer than 5 days<sup>‡</sup></li> <li>• Grade 3 diarrhea lasting longer than 2 days<sup>‡</sup></li> </ul>	<ul style="list-style-type: none"> <li>• Interrupt NERLYNX treatment</li> <li>• Diet modifications</li> <li>• Fluid intake of ~2 L/day should be maintained to avoid dehydration</li> <li>• If diarrhea resolves to ≤Grade 1 in one week or less, then resume NERLYNX treatment at the same dose</li> <li>• If diarrhea resolves to ≤Grade 1 in longer than one week, then resume NERLYNX treatment at reduced dose (see Table 3)</li> <li>• Once event resolves to ≤Grade 1 or baseline, start loperamide 4 mg with each subsequent NERLYNX administration</li> </ul>
	<ul style="list-style-type: none"> <li>• Grade 4 diarrhea [life-threatening consequences; urgent intervention indicated]</li> </ul>	<ul style="list-style-type: none"> <li>• Permanently discontinue NERLYNX treatment</li> </ul>
	<ul style="list-style-type: none"> <li>• Diarrhea recurs to Grade 2 or higher at 120 mg per day</li> </ul>	<ul style="list-style-type: none"> <li>• Permanently discontinue NERLYNX treatment</li> </ul>
Hepatotoxicity <i>[see Warnings and Precautions (5.2)]</i>	<ul style="list-style-type: none"> <li>• Grade 3 ALT or AST (&gt;5–20× ULN) OR</li> <li>• Grade 3 bilirubin (&gt;3–10× ULN)</li> </ul>	<ul style="list-style-type: none"> <li>• Hold NERLYNX until recovery to ≤Grade 1</li> <li>• Evaluate alternative causes</li> <li>• Resume NERLYNX at the next lower dose level if recovery to ≤Grade 1 occurs within 3 weeks. If Grade 3 ALT or AST, or bilirubin occurs again despite one dose reduction, permanently discontinue NERLYNX.</li> </ul>

Adverse Reaction	Severity <sup>†</sup>	Action/Dose Modification
	<ul style="list-style-type: none"> <li>Grade 4 ALT or AST (&gt;20× ULN) OR</li> <li>Grade 4 bilirubin (&gt;10× ULN)</li> </ul>	<ul style="list-style-type: none"> <li>Permanently discontinue NERLYNX</li> <li>Evaluate alternative causes</li> </ul>
Other <i>[see Adverse Reactions (6.1)]</i>	<ul style="list-style-type: none"> <li>Grade 3</li> </ul>	<ul style="list-style-type: none"> <li>Hold NERLYNX until recovery to ≤Grade 1 or baseline within 3 weeks of stopping treatment. Then resume NERLYNX at the next lower dose level.</li> </ul>
	<ul style="list-style-type: none"> <li>Grade 4</li> </ul>	<ul style="list-style-type: none"> <li>Discontinue NERLYNX permanently</li> </ul>

ALT=Alanine Aminotransferase; AST=Aspartate Aminotransferase; ULN=Upper Limit Normal

<sup>†</sup> Per CTCAE v4.0

\* Complicated features include dehydration, fever, hypotension, renal failure, or Grade 3 or 4 neutropenia.

‡ Despite being treated with optimal medical therapy

**Table 5: NERLYNX in Combination with Capecitabine Dose Modifications for Adverse Reactions**

Dose Level	NERLYNX Dose
Recommended starting dose	240 mg daily (six 40 mg tablets)
First dose reduction	160 mg daily (four 40 mg tablets)
Second dose reduction	120 mg daily (three 40 mg tablets)

**Table 6: Recommended Dosage Modifications for Adverse Reactions with NERLYNX in Combination with Capecitabine**

Adverse Reaction	Severity <sup>†</sup>	Action/Dose Modification
Diarrhea <i>[see Warnings and Precautions (5.1)]</i>	<ul style="list-style-type: none"> <li>Grade 1 Diarrhea [Increase of &lt;4 stools per day over baseline]</li> <li>Grade 2 Diarrhea [Increase of 4–6 stools per day over baseline] lasting ≤5 days</li> <li>Grade 3 Diarrhea [Increase of ≥7 stools per day over baseline; incontinence; hospitalization indicated; limiting self-care and activities of daily living] lasting ≤2 days</li> </ul>	<ul style="list-style-type: none"> <li>Adjust antidiarrheal treatment</li> <li>Continue NERLYNX and capecitabine at full doses</li> <li>Diet modifications</li> <li>Fluid intake of ~2 L/day should be maintained to avoid dehydration</li> <li>Once the event resolves to Grade ≤1 or baseline, start loperamide 4 mg with each subsequent NERLYNX administration</li> </ul>
	<ul style="list-style-type: none"> <li>Persisting and intolerable Grade 2 Diarrhea lasting &gt;5 days</li> <li>Grade 3 Diarrhea lasting &gt;2 days</li> <li>Grade 4 Diarrhea [Life-threatening consequences; urgent intervention indicated]</li> </ul>	<ul style="list-style-type: none"> <li>Adjust antidiarrheal treatment</li> <li>Hold NERLYNX and capecitabine until recovery to Grade ≤1 or baseline</li> <li>Diet modifications</li> <li>Fluid intake of ~2 L/day should be maintained intravenously, if needed</li> </ul>

Adverse Reaction	Severity <sup>†</sup>	Action/Dose Modification
		<ul style="list-style-type: none"> <li>• If recovery occurs: <ul style="list-style-type: none"> <li>○ ≤1 week after withholding treatment, resume same doses of NERLYNX and capecitabine</li> <li>○ Within 1–3 weeks after withholding treatment, reduce NERLYNX dose to 160 mg and maintain the same dose of capecitabine</li> </ul> </li> <li>• If event occurs a second time and the NERLYNX dose has not already been decreased, reduce NERLYNX dose to 160 mg (maintain the same dose of capecitabine). If NERLYNX dose has already been reduced, then reduce the dose of capecitabine to 550 mg/m<sup>2</sup> given twice daily<sup>a</sup> (maintain the same dose of NERLYNX).</li> <li>• If subsequent events occur, reduce the dose of NERLYNX or capecitabine to the next lower dose level in an alternate fashion (i.e., reduce capecitabine to 375 mg/m<sup>2</sup> given twice daily<sup>a</sup> if NERLYNX was previously reduced, or reduce NERLYNX to 120 mg if capecitabine was previously reduced)</li> <li>• Once the event resolves to Grade ≤1 or baseline, start loperamide 4 mg with each subsequent NERLYNX administration</li> </ul>
Hepatotoxicity <i>[see Warnings and Precautions (5.2)]</i>	<ul style="list-style-type: none"> <li>• Grade 3 ALT or AST (&gt;5–20× ULN) OR</li> <li>• Grade 3 bilirubin (&gt;3–10× ULN)</li> </ul>	<ul style="list-style-type: none"> <li>• Hold NERLYNX until recovery to ≤Grade 1</li> <li>• Evaluate alternative causes</li> <li>• Resume NERLYNX at the next lower dose level if recovery to ≤Grade 1 occurs within 3 weeks. If Grade 3 ALT or AST, or bilirubin occurs again despite one dose reduction, permanently discontinue NERLYNX.</li> </ul>

Adverse Reaction	Severity <sup>†</sup>	Action/Dose Modification
	<ul style="list-style-type: none"> <li>Grade 4 ALT or AST (&gt;20× ULN) OR</li> <li>Grade 4 bilirubin (&gt;10× ULN)</li> </ul>	<ul style="list-style-type: none"> <li>Permanently discontinue NERLYNX</li> <li>Evaluate alternative causes</li> </ul>
Other <i>[see Adverse Reactions (6.1)]</i>	<ul style="list-style-type: none"> <li>Grade 3</li> </ul>	<ul style="list-style-type: none"> <li>Hold NERLYNX until recovery to Grade ≤1 or baseline within 3 weeks of stopping treatment. Then resume NERLYNX at the next lower dose level.</li> </ul>
	<ul style="list-style-type: none"> <li>Grade 4</li> </ul>	<ul style="list-style-type: none"> <li>Discontinue NERLYNX permanently</li> </ul>

ALT=Alanine Aminotransferase; AST=Aspartate Aminotransferase; ULN=Upper Limit Normal

<sup>†</sup> Per CTCAE v4.0

<sup>a</sup> Since capecitabine is provided as 150 mg or 500 mg tablets, it is recommended that the capecitabine dose reduction(s) is(are) rounded down to the nearest 500 mg or multiple of 150 mg for the twice daily dose. If the patient's body surface area is >2.0, the standard of care for the study center can be utilized for capecitabine mg/m<sup>2</sup> dosing.

## 2.4 Dosage Modifications for Hepatic Impairment

Reduce the NERLYNX starting dose to 80 mg in patients with severe hepatic impairment (Child Pugh C). No dose modifications are recommended for patients with mild to moderate hepatic impairment (Child Pugh A or B) *[see Use in Specific Populations (8.6) and Clinical Pharmacology (12.3)]*.

## 2.5 Dosage Modifications for Gastric Acid Reducing Agents

*Proton pump inhibitors (PPI):* Avoid concomitant use with NERLYNX *[see Drug Interactions (7.1)]*.

*H<sub>2</sub>-receptor antagonists:* Take NERLYNX at least 2 hours before the next dose of the H<sub>2</sub>-receptor antagonist or 10 hours after the H<sub>2</sub>-receptor antagonist *[see Drug Interactions (7.1)]*.

*Antacids:* Separate dosing of NERLYNX by 3 hours after antacids *[see Drug Interactions (7.1)]*.

## 3 DOSAGE FORMS AND STRENGTHS

Tablets: 40 mg neratinib (equivalent to 48.31 mg of neratinib maleate).

Film-coated, red, oval shaped and debossed with 'W104' on one side and plain on the other side.

## 4 CONTRAINDICATIONS

None.

## 5 WARNINGS AND PRECAUTIONS

### 5.1 Diarrhea

Severe diarrhea and sequelae, such as dehydration, hypotension, and renal failure occurred during treatment with NERLYNX. Diarrhea was reported in 95% of NERLYNX-treated patients in ExteNET, a randomized placebo-controlled trial in the extended adjuvant setting who were not required to receive antidiarrheal prophylaxis. In the NERLYNX arm, Grade 3 diarrhea occurred in 40% and Grade 4 diarrhea occurred in 0.1%

of patients. The majority of patients (93%) had diarrhea in the first month of treatment, the median time to first onset of Grade  $\geq 3$  diarrhea was 8 days (range, 1–350), and the median cumulative duration of Grade  $\geq 3$  diarrhea was 5 days (range, 1–139) [see *Adverse Reactions (6.1)*].

Diarrhea was reported in 83% of NERLYNX plus capecitabine treated patients in NALA, a randomized placebo-controlled trial in the metastatic breast cancer setting who were required to receive anti-diarrheal prophylaxis in the first 21-day cycle. The majority of patients (70%) had diarrhea in the first 21 days of treatment, the median time to first onset of Grade  $\geq 3$  diarrhea was 11 days (range, 2–728) and the median cumulative duration of Grade  $\geq 3$  diarrhea was 3 days (range, 1–21). In the NERLYNX plus capecitabine arm, Grade 3 diarrhea occurred in 24% of patients [see *Adverse Reactions (6.1)*].

Antidiarrheal prophylaxis has been shown to lower the incidence and severity of diarrhea. Instruct patients to initiate antidiarrheal prophylaxis with loperamide along with the first dose of NERLYNX and continue during the first 56 days of treatment; after day 56, titrate dose to achieve 1–2 bowel movements per day and not to exceed 16 mg loperamide per day [see *Dosage and Administration (2.1)*]. Consider adding other agents to loperamide as clinically indicated [see *Adverse Reactions (6.1)*].

Alternatively, a 2-week NERLYNX dose escalation approach prior to initiation of the recommended treatment regimen with NERLYNX can also be considered for diarrhea management [see *Dosage and Administration (2.2)*]. For patients who used NERLYNX dose escalation, the median time to first onset of Grade  $\geq 3$  diarrhea was 45 days (range, 15–132) and the median cumulative duration of Grade  $\geq 3$  diarrhea was 2.5 days (range, 1–6). Grade 3 diarrhea occurred in 13% of patients who used NERLYNX dose escalation [see *Adverse Reactions (6.1)*].

Monitor patients for diarrhea and treat with additional antidiarrheals as needed. When severe diarrhea with dehydration occurs, administer fluid and electrolytes as needed, interrupt NERLYNX, and reduce subsequent doses [see *Dosage and Administration (2.3)*]. Perform stool cultures as clinically indicated to exclude infectious causes of Grade 3 or 4 diarrhea or diarrhea of any grade with complicating features (dehydration, fever, neutropenia).

## 5.2 Hepatotoxicity

NERLYNX has been associated with hepatotoxicity characterized by increased liver enzymes. In ExteNET, 10% of patients experienced an alanine aminotransferase (ALT) increase  $\geq 2 \times$  ULN, 5% of patients experienced an aspartate aminotransferase (AST) increase  $\geq 2 \times$  ULN, and 1.7% of patients experienced an AST or ALT increase  $> 5 \times$  ULN ( $\geq$  Grade 3). Hepatotoxicity or increases in liver transaminases led to drug discontinuation in 1.7% of NERLYNX-treated patients.

In the NALA study, in NERLYNX and capecitabine-treated patients, 7% experienced an ALT or AST increase  $> 3 \times$  ULN, 2% experienced an ALT or AST increase  $> 5 \times$  ULN, 7% experienced a bilirubin increase  $> 1.5 \times$  ULN, and 1.3% experienced a bilirubin increase  $> 3 \times$  ULN. Hepatotoxicity or increases in liver transaminases led to drug discontinuation in 0.3% of NERLYNX and capecitabine-treated patients.

Total bilirubin, AST, ALT, and alkaline phosphatase should be measured prior to starting treatment with NERLYNX monthly for the first 3 months of treatment, then every 3 months while on treatment and as clinically indicated. These tests should also be performed in patients experiencing Grade 3 diarrhea or any signs or symptoms of hepatotoxicity, such as worsening of fatigue, nausea, vomiting, right upper quadrant tenderness, fever, rash, or eosinophilia [see *Dosage and Administration (2.3)* and *Adverse Reactions (6.1)*].

## 5.3 Embryo-Fetal Toxicity

Based on findings from animal studies and its mechanism of action, NERLYNX can cause fetal harm when administered to a pregnant woman. In animal reproduction studies, administration of neratinib to pregnant rabbits during organogenesis caused abortions, embryo-fetal death, and fetal abnormalities in rabbits at maternal AUCs approximately 0.2 times the AUC in patients receiving the recommended dose. Advise pregnant women of the potential risk to a fetus. Advise females of reproductive potential to use effective contraception during

treatment and for at least 1 month after the last dose. [see Use in Specific Populations (8.1, 8.3) and Clinical Pharmacology (12.1)].

## 6 ADVERSE REACTIONS

The following clinically significant adverse reactions are described elsewhere in the labeling:

- Diarrhea [see Warnings and Precautions (5.1)]
- Hepatotoxicity [see Warnings and Precautions (5.2)]

### 6.1 Clinical Trials Experience

Because clinical trials are conducted under widely varying conditions, adverse reaction rates observed in the clinical trials of a drug cannot be directly compared to rates in the clinical trials of another drug and may not reflect the rates observed in practice.

#### Extended Adjuvant Treatment of Early-Stage Breast Cancer

##### ExteNET

The data described below reflect the safety data of NERLYNX as a single agent in ExteNET, a multicenter, randomized, double-blind, placebo-controlled study of NERLYNX within 2 years after completion of adjuvant treatment with trastuzumab-based therapy in women with HER2-positive early-stage breast cancer. Patients who received NERLYNX in this trial were not required to receive any prophylaxis with antidiarrheal agents to prevent the NERLYNX-related diarrhea. Patients were treated with 240 mg of NERLYNX given orally once daily with food, continuously until disease recurrence or for up to one year. The median duration of treatment was 11.6 months in the NERLYNX arm and 11.8 months in the placebo arm. The median age was 52 years (60% were  $\geq 50$  years old, 12% were  $\geq 65$  years old); 81% were Caucasian, 3% Black or African American, 14% Asian, and 3% other. A total of 1408 patients were treated with NERLYNX.

NERLYNX dose reduction due to an adverse reaction of any grade occurred in 31% of patients receiving NERLYNX compared to 2.6% of patients receiving placebo. Permanent discontinuation due to any adverse reaction was reported in 28% of NERLYNX-treated patients. The most common adverse reaction leading to discontinuation was diarrhea, accounting for 17% of NERLYNX-treated patients.

The most common adverse reactions ( $\geq 5\%$ ) were diarrhea, nausea, abdominal pain, fatigue, vomiting, rash, stomatitis, decreased appetite, muscle spasms, dyspepsia, AST or ALT increased, nail disorder, dry skin, abdominal distention, epistaxis, weight decreased, and urinary tract infection. The most frequently reported Grade 3 or 4 adverse reactions were diarrhea, vomiting, nausea, and abdominal pain.

Serious adverse reactions in the NERLYNX arm included diarrhea (1.6%), vomiting (0.9%), dehydration (0.6%), cellulitis (0.4%), renal failure (0.4%), erysipelas (0.4%), ALT increased (0.3%), AST increased (0.3%), nausea (0.3%), fatigue (0.2%), and abdominal pain (0.2%).

Table 7 summarizes the adverse reactions in ExteNET.

**Table 7: Adverse Reactions Reported in  $\geq 2\%$  of NERLYNX-Treated Patients in ExteNET**

System Organ Class (Preferred Term)	NERLYNX n=1408			Placebo n=1408		
	All Grades (%)	Grade 3 (%)	Grade 4 (%)	All Grades (%)	Grade 3 (%)	Grade 4 (%)
<b>Gastrointestinal Disorders</b>						
Diarrhea	95	40	0.1	35	2	0
Nausea	43	2	0	22	0.1	0
Abdominal pain*	36	2	0	15	0.4	0
Vomiting	26	3	0	8	0.4	0

System Organ Class (Preferred Term)	NERLYNX n=1408			Placebo n=1408		
	All Grades (%)	Grade 3 (%)	Grade 4 (%)	All Grades (%)	Grade 3 (%)	Grade 4 (%)
Stomatitis <sup>†</sup>	14	0.6	0	6	0.1	0
Dyspepsia	10	0.4	0	4	0	0
Abdominal distension	5	0.3	0	3	0	0
Dry mouth	3	0.1	0	2	0	0
<b>General Disorders and Administration Site Conditions</b>						
Fatigue	27	2	0	20	0.4	0
<b>Hepatobiliary Disorders</b>						
Alanine aminotransferase increased	9	1	0.2	3	0.2	0
Aspartate aminotransferase increased	7	0.5	0.2	3	0.3	0
<b>Infections and Infestations</b>						
Urinary tract infection	5	0.1	0	2	0	0
<b>Investigations</b>						
Weight decreased	5	0.1	0	0.5	0	0
<b>Metabolism and Nutrition Disorders</b>						
Decreased appetite	12	0.2	0	3	0	0
Dehydration	4	0.9	0.1	0.4	0.1	0
<b>Musculoskeletal and Connective Tissue Disorders</b>						
Muscle spasms	11	0.1	0	3	0.1	0
<b>Respiratory, Thoracic and Mediastinal Disorders</b>						
Epistaxis	5	0	0	1	0.1	0
<b>Skin and Subcutaneous Tissue Disorders</b>						
Rash <sup>‡</sup>	18	0.6	0	9	0	0
Dry skin	6	0	0	2	0	0
Nail disorder <sup>§</sup>	8	0.3	0	2	0	0
Skin fissures	2	0.1	0	0.1	0	0

\* Includes abdominal pain, abdominal pain upper, and abdominal pain lower

† Includes stomatitis, aphthous stomatitis, mouth ulceration, oral mucosal blistering, mucosal inflammation, oropharyngeal pain, oral pain, glossodynia, glossitis, and cheilitis

‡ Includes rash, rash erythematous, rash follicular, rash generalized, rash pruritic, rash pustular, rash maculo-papular, rash papular, dermatitis, dermatitis acneiform, and toxic skin eruption

§ Includes nail disorder, paronychia, onychoclasia, nail discoloration, nail toxicity, nail growth abnormal, and nail dystrophy

### **Advanced or Metastatic Breast Cancer**

#### **NALA**

The data described below reflect the safety data of NERLYNX plus capecitabine in NALA, a randomized, multicenter, multinational, open-label, active-controlled study of HER2-positive metastatic breast cancer in patients, with or without brain metastases, who have received two or more prior anti HER2-based regimens in the metastatic setting.

Patients were treated with NERLYNX 240 mg orally once daily Days 1–21 of a 21-day cycle in combination with capecitabine (750 mg/m<sup>2</sup> given orally twice daily) Days 1–14 of a 21-day cycle, or lapatinib 1250 mg orally once daily Days 1–21 of a 21-day cycle in combination with capecitabine (1000 mg/m<sup>2</sup> given orally twice daily) Days 1–14 of a 21-day cycle until disease progression. The median duration of treatment was 5.7 months in the NERLYNX plus capecitabine arm and 4.4 months in the lapatinib plus capecitabine arm.

NERLYNX dose reduction due to an adverse reaction of any grade occurred in 10% of patients receiving NERLYNX plus capecitabine. Permanent discontinuation due to any adverse reaction was reported in 14% of NERLYNX plus capecitabine treated patients. The most common adverse reactions leading to discontinuation

were vomiting (3.6%), diarrhea (2.6%), nausea (2.6%), and palmar-plantar erythrodysesthesia syndrome (2.3%) of NERLYNX plus capecitabine-treated patients.

The most common adverse reactions of any grade ( $\geq 5\%$ ) in the NERLYNX plus capecitabine arm were diarrhea, nausea, vomiting, decreased appetite, constipation, fatigue/asthenia, weight decreased, dizziness, back pain, arthralgia, urinary tract infection, upper respiratory tract infection, abdominal distention, renal impairment, and muscle spasms. The most frequently reported Grade 3 or 4 adverse reactions were diarrhea, nausea, vomiting, fatigue, and decreased appetite.

Serious adverse reactions  $\geq 2\%$  in the NERLYNX plus capecitabine arm included diarrhea (7%), vomiting (3%), nausea (2.3%), and acute kidney injury (2.3%).

Table 8 summarizes the adverse reactions in NALA.

**Table 8: Adverse Reactions Reported in  $\geq 2\%$  of NERLYNX-Treated Patients in Combination with Capecitabine in NALA**

System Organ Class (Preferred Term)	NERLYNX + Capecitabine n=303			Lapatinib + Capecitabine n=311		
	All Grades (%)	Grade 3 (%)	Grade 4 (%)	All Grades (%)	Grade 3 (%)	Grade 4 (%)
<b>Gastrointestinal Disorders</b>						
Diarrhea	83	25	0	66	13	0
Nausea	53	4.3	0	42	2.9	0
Vomiting	46	4	0	31	1.9	0
Constipation	31	1	0	13	0	0
Abdominal distension	8	0.3	0	3.2	0.6	0
<b>General Disorders and Administration Site Conditions</b>						
Fatigue/asthenia	45	6	0	40	4.5	0
Malaise	4.3	0	0	2.3	0.3	0
Influenza like illness	4	0	0	1.3	0	0
<b>Infections and Infestations</b>						
Urinary tract infection	9	0.7	0	4.2	0.6	0
Upper respiratory tract infection	8	0.3	0	4.5	0.3	0
<b>Investigations</b>						
Weight decreased	20	0.3	0	13	0.6	0
<b>Metabolism and Nutrition Disorders</b>						
Decreased appetite	35	2.6	0	22	2.3	0
<b>Musculoskeletal and Connective Tissue Disorders</b>						
Back pain	10	0.3	0	8	0.3	0
Arthralgia	10	0	0	6	1	0
Muscle spasms	5	0	0	1.9	0	0
<b>Nervous System Disorder</b>						
Dizziness	14	0.3	0	10	0.6	0
<b>Renal and urinary disorders</b>						
Renal impairment*	7	2	0.3	1	0	0.3
Dysuria	4.6	0	0	1.9	0	0

\* Renal impairment includes acute kidney injury, blood creatinine increased, renal failure, and renal impairment.

### Management of Diarrhea

#### CONTROL

The CONTROL (NCT02400476) study was a multicenter, open-label, multi-cohort trial evaluating patients with early-stage HER2-positive breast cancer treated with NERLYNX 240 mg daily for up to one year receiving loperamide prophylaxis with additional anti-diarrheal treatment as needed or NERLYNX dose escalation with loperamide as needed. All patients in the prophylaxis cohort received loperamide 4 mg loading



dose, followed by 4 mg three times a day from days 1-14, followed by 4 mg twice a day on days 15-56, followed by loperamide as needed through 1 year of treatment with NERLYNX [see *Dosage and Administration (2.1)*]. All patients in the dose escalation cohort received NERLYNX 120 mg for Week 1, followed by NERLYNX 160 mg for Week 2, followed by NERLYNX 240 mg for Week 3 and thereafter [see *Dosage and Administration (2.2)*].

Table 9 summarizes the diarrhea adverse reactions for NERLYNX with loperamide prophylaxis and NERLYNX dose escalation.

**Table 9: Diarrhea in Patients Treated with NERLYNX with Antidiarrheal Prophylaxis or Dose Escalation**

	<b>Loperamide Prophylaxis n=109</b>	<b>NERLYNX Dose Escalation n=60</b>
<b>Duration of Treatment, months</b>		
Median	11.8	12.0
Range	0.1, 12.8	0.2, 12.4
<b>Dose Intensity, mg per day</b>		
Median	234	230
Range	46, 240	32, 236
<b>Incidence of Diarrhea, %</b>		
Any Grade	78	98
Grade 2	25	45
Grade 3	32	13
<b>Action Taken, %</b>		
Discontinuation due to diarrhea	18	3.3

## 7 DRUG INTERACTIONS

### 7.1 Effect of Other Drugs on NERLYNX

Table 10 includes drug interactions that affect the pharmacokinetics of neratinib.

**Table 10: Drug Interactions that Affect NERLYNX**

<b>Gastric Acid Reducing Agents</b>	
<i>Clinical Impact</i>	Concomitant use of NERLYNX with a proton pump inhibitor (PPI), H <sub>2</sub> -receptor antagonist, or antacid may decrease neratinib AUC [see <i>Clinical Pharmacology (12.3)</i> ], which may reduce NERLYNX activity.
<i>Prevention or Management [see Dosage and Administration (2.5)]</i>	Avoid concomitant use of PPIs.
	Separate administration of NERLYNX at least 2 hours before or 10 hours after the H <sub>2</sub> -receptor antagonist dose.
	Separate administration of NERLYNX by at least 3 hours after antacids.

<b>Strong CYP3A4 Inhibitors</b>	
<i>Clinical Impact</i>	Concomitant use of NERLYNX with a strong CYP3A4 inhibitor increased neratinib C <sub>max</sub> and AUC [see <i>Clinical Pharmacology (12.3)</i> ], which may increase the risk of NERLYNX toxicity.
<i>Prevention or Management</i>	Avoid concomitant use of NERLYNX with strong CYP3A4 inhibitors.
<b>P-gp and Moderate CYP3A4 Dual Inhibitors</b>	
<i>Clinical Impact</i>	Concomitant use of NERLYNX with a P-gp and moderate CYP3A4 dual inhibitor may increase neratinib C <sub>max</sub> and AUC [see <i>Clinical Pharmacology (12.3)</i> ], which may increase the risk of NERLYNX toxicity.
<i>Prevention or Management</i>	Avoid concomitant use of NERLYNX with P-gp and moderate CYP3A4 dual inhibitors.
<b>Strong or Moderate CYP3A4 Inducers</b>	
<i>Clinical Impact</i>	Concomitant use of NERLYNX with a strong CYP3A4 inducer reduced neratinib C <sub>max</sub> and AUC [see <i>Clinical Pharmacology (12.3)</i> ], which may reduce NERLYNX activity.
<i>Prevention or Management</i>	Avoid concomitant use of NERLYNX with strong or moderate CYP3A4 inducers.

AUC=Area Under Curve; C<sub>max</sub>=Maximum Concentration

## 7.2 Effect of NERLYNX on Other Drugs

### Certain P-glycoprotein (P-gp) Substrates

Concomitant use of NERLYNX increased concentrations of a P-gp substrate [see *Clinical Pharmacology (12.3)*], which may increase the risk of adverse reactions of these substrates. Monitor for adverse reactions of certain P-gp substrates for which minimal concentration changes may lead to serious adverse reactions.

## 8 USE IN SPECIFIC POPULATIONS

### 8.1 Pregnancy

#### Risk Summary

Based on findings from animal studies and the mechanism of action, NERLYNX can cause fetal harm when administered to a pregnant woman [see *Clinical Pharmacology (12.1)*].

There are no available data in pregnant women to inform the drug-associated risk. In animal reproduction studies, administration of neratinib to pregnant rabbits during organogenesis resulted in abortions, embryo-fetal death and fetal abnormalities in rabbits at maternal exposures (AUC) approximately 0.2 times exposures in patients at the recommended dose (*see Data*). Advise pregnant women of the potential risk to a fetus.

The background risk of major birth defects and miscarriage for the indicated population is unknown. However, the background risk of major birth defects is 2%–4% and of miscarriage is 15%–20% of clinically recognized pregnancies in the U.S. general population.

## Data

### *Animal Data*

In a fertility and early embryonic development study in female rats, neratinib was administered orally for 15 days before mating to Day 7 of pregnancy, which did not cause embryonic toxicity at doses up to 12 mg/kg/day in the presence of maternal toxicity. A dose of 12 mg/kg/day in rats is approximately 0.5 times the maximum recommended dose of 240 mg/day in patients on a mg/m<sup>2</sup> basis.

In an embryo-fetal development study in rats, pregnant animals received oral doses of neratinib up to 15 mg/kg/day during the period of organogenesis. No effects on embryo-fetal development or survival were observed. Maternal toxicity was evident at 15 mg/kg/day (approximately 0.6 times the AUC in patients receiving the maximum recommended dose of 240 mg/day).

In an embryo-fetal development study in rabbits, pregnant animals received oral doses of neratinib up to 9 mg/kg/day during the period of organogenesis. Administration of neratinib at doses  $\geq 6$  mg/kg/day resulted in maternal toxicity, abortions, and embryo-fetal death (increased resorptions). Neratinib administration resulted in increased incidence of fetal gross external (domed head), soft tissue (dilation of the brain ventricles and ventricular septal defect), and skeletal (misshapen anterior fontanelles and enlarged anterior and/or posterior fontanelles) abnormalities at  $\geq 3$  mg/kg/day. The AUC<sub>(0-t)</sub> at 6 mg/kg/day and 9 mg/kg/day in rabbits were approximately 0.5 and 0.8 times, respectively, the AUCs in patients receiving the maximum recommended dose of 240 mg/day.

In a peri- and postnatal development study in rats, oral administration of neratinib from gestation day 7 until lactation day 20 resulted in maternal toxicity at  $\geq 10$  mg/kg/day (approximately 0.4 times the maximum recommended dose of 240 mg/day in patients on a mg/m<sup>2</sup> basis) including decreased body weights, body weight gains, and food consumption. Effects on long-term memory were observed in male offspring at maternal doses  $\geq 5$  mg/kg/day (approximately 0.2 times the maximum recommended dose of 240 mg/day in patients on a mg/m<sup>2</sup> basis).

## **8.2 Lactation**

### Risk Summary

No data are available regarding the presence of neratinib or its metabolites in human milk or its effects on the breastfed infant or on milk production. Because of the potential for serious adverse reactions in breastfed infants from NERLYNX, advise lactating women not to breastfeed while taking NERLYNX and for at least 1 month after the last dose.

## **8.3 Females and Males of Reproductive Potential**

### Pregnancy

Based on animal studies, NERLYNX can cause fetal harm when administered to a pregnant woman [*see Use in Specific Populations (8.1)*]. Females of reproductive potential should have a pregnancy test prior to starting treatment with NERLYNX.

### Contraception

#### *Females*

Based on animal studies, NERLYNX can cause fetal harm when administered to a pregnant woman [*see Use in Specific Populations (8.1)*]. Advise females of reproductive potential to use effective contraception during treatment with NERLYNX and for at least 1 month after the last dose.

## Males

Based on findings in animal reproduction studies, advise male patients with female partners of reproductive potential to use effective contraception during treatment and for 3 months after the last dose of NERLYNX [see *Use in Specific Populations (8.1)*].

### 8.4 Pediatric Use

The safety and efficacy of NERLYNX in pediatric patients has not been established.

### 8.5 Geriatric Use

In the ExteNET trial, in the NERLYNX arm; 1236 patients were <65 years, 172 patients were ≥65 years, of whom 25 patients were 75 years or older. There was a higher frequency of treatment discontinuations due to adverse reactions in the ≥65 years age group than in the <65 years age group; in the NERLYNX arm, the percentages were 45% compared with 25%, respectively, and in the placebo arm 6% and 5%, respectively. The incidence of serious adverse reactions in the NERLYNX arm vs placebo arm was 7% vs 6% (<65 years old) and 10% vs 8% (≥65 years old). The serious adverse reactions most frequently reported in the ≥65 years old group were vomiting (2.3%), diarrhea (1.7%), renal failure (1.7%), and dehydration (1.2%).

In the NALA trial, in the NERLYNX plus capecitabine arm; 242 patients were <65 years, 61 patients were ≥65 years, of whom 12 patients were 75 years or older. The incidence of serious adverse reactions in the NERLYNX plus capecitabine arm in the ≥65 years age group was 36% and in the <65 years age group was 34%. The serious adverse reactions most frequently reported in the ≥65 years age group were diarrhea (16%), acute kidney injury (8%), and dehydration (7%). No overall differences in effectiveness were observed between patients ≥65 years old and patients <65 years old.

### 8.6 Hepatic Impairment

No dosage modifications are recommended for patients with mild to moderate hepatic impairment (Child Pugh A or B).

Neratinib clearance is reduced, and  $C_{max}$  and AUC increase in patients with severe, pre-existing hepatic impairment (Child Pugh C). Reduce the NERLYNX dosage for patients with severe hepatic impairment [see *Dosage and Administration (2.4)* and *Clinical Pharmacology (12.3)*].

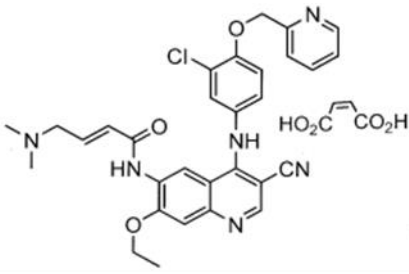
## 10 OVERDOSAGE

There is no specific antidote, and the benefit of hemodialysis in the treatment of NERLYNX overdose is unknown. In the event of an overdose, administration should be withheld and general supportive measures undertaken.

In the clinical trial setting, a limited number of patients reported overdose. The adverse reactions experienced by these patients were diarrhea, nausea, vomiting, and dehydration. The frequency and severity of gastrointestinal disorders (diarrhea, abdominal pain, nausea, and vomiting) appear to be dose related.

## 11 DESCRIPTION

NERLYNX (neratinib) immediate release, film-coated tablets for oral administration contain 40 mg of neratinib, equivalent to 48.31 mg neratinib maleate. Neratinib is a member of the 4-anilino quinolidine class of protein kinase inhibitors. The molecular formula for neratinib maleate is  $C_{30}H_{29}ClN_6O_3 \cdot C_4H_4O_4$  and the molecular weight is 673.11 Daltons. The chemical name is (E)-N-{4-[3-chloro-4-(pyridin-2-yl methoxy)anilino]-3-cyano-7-ethoxyquinolin-6-yl}-4-(dimethylamino)but-2-enamide maleate, and its structural formula is:



Neratinib maleate is an off-white to yellow powder with  $pK_{a,s}$  of 7.65 and 4.66. The solubility of neratinib maleate increases dramatically as neratinib becomes protonated at acidic pH. Neratinib maleate is sparingly soluble at pH 1.2 (32.90 mg/mL) and insoluble at approximately pH 5.0 and above (0.08 mg/mL or less).

Inactive ingredients: Tablet Core: colloidal silicon dioxide, mannitol, microcrystalline cellulose, crospovidone, povidone, magnesium stearate, and purified water. Coating: red film coat: polyvinyl alcohol, titanium dioxide, polyethylene glycol, talc, and iron oxide red.

## 12 CLINICAL PHARMACOLOGY

### 12.1 Mechanism of Action

Neratinib is an intracellular kinase inhibitor that irreversibly binds to epidermal growth factor receptor (EGFR), HER2, and HER4. *In vitro*, neratinib reduces EGFR and HER2 autophosphorylation, downstream MAPK and AKT signaling pathways, and showed antitumor activity in EGFR and/or HER2 expressing carcinoma cell lines. Neratinib human metabolites M3, M6, M7 and M11 inhibited the activity of EGFR, HER2, and HER4 *in vitro*. *In vivo*, oral administration of neratinib inhibited tumor growth in mouse xenograft models with tumor cell lines expressing HER2 and EGFR.

### 12.2 Pharmacodynamics

Neratinib exposure-response relationships and the time course of pharmacodynamic response are unknown.

#### Cardiac Electrophysiology

The effect of NERLYNX on the QTc interval was evaluated in a randomized, placebo, and positive-controlled, double-blind, single-dose, crossover study in 60 healthy subjects. At 140% the therapeutic exposures of NERLYNX, there was no clinically relevant effect on the QTc interval.

### 12.3 Pharmacokinetics

Neratinib AUC increases in less than dose proportional manner over a daily dose range of 40 to 400 mg (0.17 to 1.7 times the maximum approved recommended dosage).

#### Absorption

Peak concentrations of neratinib and major active metabolites M3, M6 and M7 are reached in the range of 2 to 8 hours after oral administration.

#### *Effect of Food*

A high-fat meal (approximately 55% fat, 31% carbohydrate, and 14% protein) increased neratinib  $C_{max}$  and  $AUC_{inf}$  by 70% (90% CI: 1.1–2.7) and 120% (90% CI: 1.4–3.5), respectively, in healthy subjects compared to fasting conditions. A standard breakfast (approximately 50% carbohydrate, 35% fat, and 15% protein) increased the  $C_{max}$  and  $AUC_{inf}$  by 20% (90% CI: 0.97–1.42) and 10% (90% CI: 1.02–1.24), respectively, in healthy subjects [see *Dosage and Administration* (2.2)].

## Distribution

The mean (%CV) apparent volume of distribution at steady state ( $V_{ss}/F$ ) was 6433 (19%) L in patients. In vitro protein binding of neratinib was greater than 99%, predominantly to serum albumin and alpha-1 acid glycoprotein, and was independent of concentration.

## Elimination

The mean (%CV) plasma half-life of neratinib, M3, M6, and M7 was 14.6 (38%), 21.6 (77%), 13.8 (50%) and 10.4 (33%) hours, respectively, in healthy subjects. The mean elimination half-life of neratinib ranged from 7 to 17 hours following a single oral dose in patients. The mean (%CV) CL/F after first dose and at steady state (day 21) were 216 (34%) and 281 (40%) L/hour, respectively, in patients.

## *Metabolism*

Neratinib is metabolized primarily in the liver by CYP3A4 and to a lesser extent by flavin-containing monooxygenase (FMO).

Neratinib represents the most prominent component in plasma. The systemic exposures (AUC) of the active metabolites M3, M6, M7 and M11 were 15%, 33%, 22%, and 4% of the systemic neratinib exposure, respectively, at steady state in healthy subjects.

## *Excretion*

After oral administration of radiolabeled neratinib 200 mg (0.83 times of maximum approved recommended dosage), fecal excretion accounted for approximately 97% and urinary excretion accounted for 1.1% of the total dose. Sixty-one percent of the excreted radioactivity was recovered within 96 hours and 98% was recovered after 10 days.

## Specific Populations

Age, sex, race, and renal function do not have a clinically significant effect on neratinib pharmacokinetics.

### *Patients With Hepatic Impairment*

Neratinib exposures in patients with mild (Child Pugh A) and moderate hepatic impairment (Child Pugh B) were similar to that in healthy subjects with normal hepatic function. Neratinib  $C_{max}$  and AUC increased by 173% and 181%, respectively, in patients with severe hepatic impairment (Child Pugh C) as compared to subjects with normal hepatic function [see *Dosage and Administration (2.4) and Use in Specific Populations (8.6)*].

## Drug Interaction Studies

### *Clinical Studies and Model-Informed Approaches*

**Gastric Acid Reducing Agents:** Concomitant use with lansoprazole (proton pump inhibitor) decreased neratinib  $C_{max}$  by 71% and AUC by 65%. When NERLYNX was administered 2 hours after ranitidine ( $H_2$  receptor antagonist), the neratinib  $C_{max}$  was reduced by 57% and AUC by 48%. When NERLYNX was administered 2 hours prior to ranitidine, neratinib  $C_{max}$  was reduced by 44% and AUC by 32% [see *Dosage and Administration (2.5) and Drug Interactions (7.1)*].

**Strong CYP3A4 Inhibitors:** Concomitant use of ketoconazole (strong inhibitor of CYP3A4 and P-gp inhibitor) increased neratinib  $C_{max}$  by 221% and AUC by 381% [see *Drug Interactions (7.1)*].

**P-gp and moderate CYP3A4 Dual Inhibitors:** Verapamil (moderate CYP3A4 and P-gp dual inhibitor) increased the  $C_{max}$  and AUC of neratinib by 203% and 299%, respectively [see *Drug Interactions (7.1)*].

**Moderate CYP3A4 Inhibitors:** Fluconazole (moderate CYP3A4 inhibitor) increased the  $C_{max}$  and AUC of neratinib by 30% and 68%, respectively.

**Strong and Moderate CYP3A4 Inducers:** Concomitant use of rifampin (strong CYP3A4 inducer) decreased neratinib  $C_{max}$  by 76% and AUC by 87%. The AUC of active metabolites M6 and M7 were also reduced by 37–

49% when compared to NERLYNX administered alone. Efavirenz (moderate CYP3A4 inducer) decreased the  $C_{max}$  of neratinib by 36% and AUC by 52% [see *Drug Interactions (7.1)*].

*Effect of NERLYNX on P-gp Transporters:* Concomitant use of NERLYNX increased the mean digoxin (P-gp substrate)  $C_{max}$  by 54% and AUC by 32% [see *Drug Interactions (7.2)*].

## 13 NONCLINICAL TOXICOLOGY

### 13.1 Carcinogenesis, Mutagenesis, Impairment of Fertility

A two-year carcinogenicity study was conducted in rats at oral neratinib doses of 1, 3, and 10 mg/kg/day. Neratinib was not carcinogenic in male and female rats at exposure levels >25 times the AUC in patients receiving the maximum recommended dose of 240 mg/day. Neratinib was not carcinogenic in a 26-week study in Tg.rasH2 transgenic mice when administered daily by oral gavage at doses up to 50 mg/kg/day in males and 125 mg/kg/day in females.

Neratinib was not mutagenic in an *in vitro* bacterial reverse mutation (AMES) assay or clastogenic in an *in vitro* human lymphocyte chromosomal aberration assay or an *in vivo* rat bone marrow micronucleus assay.

In a fertility study in rats, neratinib administration up to 12 mg/kg/day (approximately 0.5 times the maximum recommended dose of 240 mg/day in patients on a mg/m<sup>2</sup> basis) caused no effects on mating or the ability of animals to become pregnant. In repeat-dose toxicity studies in dogs with oral administration of neratinib daily for up to 39 weeks, tubular hypoplasia of the testes was observed at  $\geq 0.5$  mg/kg/day. This finding was observed at AUCs that were approximately 0.4 times the AUC in patients at the maximum recommended dose of 240 mg.

## 14 CLINICAL STUDIES

### 14.1 Extended Adjuvant Treatment of Early-Stage Breast Cancer

The safety and efficacy of NERLYNX were investigated in the ExteNET trial (NCT00878709), a multicenter, randomized, double-blind, placebo-controlled study of NERLYNX after adjuvant treatment with a trastuzumab based therapy in women with HER2-positive breast cancer.

A total of 2840 patients with early-stage (Stage 1 to 3c) HER2-positive breast cancer within two years of completing treatment with adjuvant trastuzumab was randomized to receive either NERLYNX (n=1420) or placebo (n=1420). Randomization was stratified by the following factors: hormone receptor status, nodal status (0, 1–3, vs 4 or more positive nodes) and whether trastuzumab was given sequentially versus concurrently with chemotherapy. NERLYNX 240 mg or placebo was given orally once daily for one year. The major efficacy outcome measure was invasive disease-free survival (iDFS) defined as the time between the date of randomization to the first occurrence of invasive recurrence (local/regional, ipsilateral, or contralateral breast cancer), distant recurrence, or death from any cause, with 2 years and 28 days of follow-up.

Patient demographics and tumor characteristics were generally balanced between treatment arms. Patients had a median age of 52 years (range 23 to 83) and 12% of patients were 65 or older. The majority of patients were White (81%), and most patients (99.7%) had an ECOG performance status of 0 or 1. Fifty-seven percent (57%) of patients had hormone receptor positive disease (defined as ER-positive and/or PR-positive), 24% were node negative, 47% had one to three positive nodes and 30% had four or more positive nodes. Ten percent (10%) of patients had Stage I disease, 41% had Stage II disease and 31% had Stage III disease. The majority of patients (81%) were enrolled within one year of completion of trastuzumab treatment. Median time from the last adjuvant trastuzumab treatment to randomization was 4.4 months in the NERLYNX arm versus 4.6 months in the placebo arm. Median duration of treatment was 11.6 months in the NERLYNX arm vs 11.8 months in the placebo arm.

The efficacy results from the ExteNET trial are summarized in Table 11 and Figure 1.

**Table 11: Efficacy iDFS Results for the ITT Population**

Number of Events/Total N (%)		iDFS at 24 months,* % (95% CI)		Stratified <sup>†</sup> HR (95% CI)	P-value <sup>‡</sup>
NERLYNX	Placebo	NERLYNX	Placebo		
67/1420 (4.7)	106/1420 (7.5)	94.2 (92.6, 95.4)	91.9 (90.2, 93.2)	0.66 (0.49, 0.90)	0.008

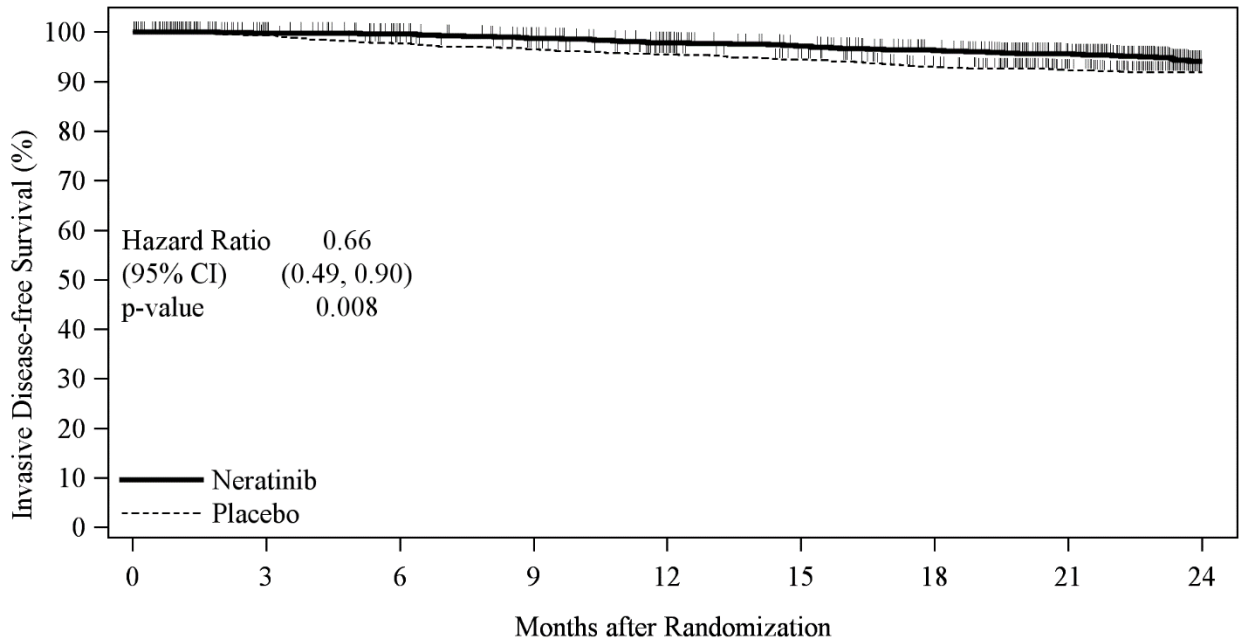
CI= Confidence Interval; HR=Hazard Ratio; iDFS=Invasive Disease Free-Survival; ITT=Intent to Treat

\* Kaplan-Meier estimate

† Stratified by prior trastuzumab (concurrent vs sequential), nodal status (0–3 positive nodes vs ≥4 positive nodes), and ER/PR status (positive vs negative)

‡ Stratified log-rank test

**Figure 1: iDFS in the ExteNET Trial - ITT Population**



Number at Risk	0	3	6	9	12	15	18	21	24
Neratinib	1420	1288	1257	1227	1188	1150	1108	1033	662
Placebo	1420	1367	1323	1291	1242	1206	1161	1089	704

CI=Confidence Interval; iDFS=Invasive Disease Free-Survival; ITT=Intent to Treat

**Table 12: Subgroup Analyses\***

Population	Number of Events/Total N (%)		iDFS at 24 Months, <sup>†</sup> % (95% CI)		Unstratified HR (95% CI)
	NERLYNX	Placebo	NERLYNX	Placebo	
<b>Hormone Receptor Status</b>					
Positive	29/816 (3.6)	63/815 (7.7)	95.6 (93.8, 96.9)	91.5 (89.2, 93.3)	0.49 (0.31, 0.75)
Negative	38/604 (6.3)	43/605 (7.1)	92.2 (89.4, 94.3)	92.4 (89.8, 94.3)	0.93 (0.60, 1.43)



Population	Number of Events/Total N (%)		iDFS at 24 Months, <sup>†</sup> % (95% CI)		Unstratified HR (95% CI)
	NERLYNX	Placebo	NERLYNX	Placebo	
<b>Nodal Status</b>					
Negative	7/335 (2.1)	11/336 (3.3)	97.2 (94.1, 98.7)	96.5 (93.7, 98.0)	0.72 (0.26, 1.83)
1–3 Positive Nodes	31/664 (4.7)	47/664 (7.1)	94.4 (92.2, 96.1)	92.4 (90.0, 94.2)	0.68 (0.43, 1.07)
≥4 Positive Nodes	29/421 (6.9)	48/420 (11.4)	91.4 (87.9, 94.0)	87.3 (83.4, 90.2)	0.62 (0.39, 0.97)
<b>Prior Trastuzumab</b>					
Concurrent	49/884 (5.5)	66/886 (7.4)	93.2 (91.0, 94.8)	92.0 (89.9, 93.7)	0.80 (0.55, 1.16)
Sequential	18/536 (3.4)	40/534 (7.5)	95.8 (93.4, 97.3)	91.6 (88.7, 93.8)	0.46 (0.26, 0.78)
<b>Completion of Prior Trastuzumab</b>					
≤1 Year	58/1152 (5.0)	95/1145 (8.3)	93.8 (92.0, 95.2)	90.9 (89.0, 92.5)	0.63 (0.45, 0.88)
1–2 Years	9/262 (3.4)	11/270 (4.1)	95.8 (92.0, 97.8)	95.7 (92.3, 97.6)	0.92 (0.37, 2.22)

CI=Confidence Interval; HR=Hazard Ratio

\* Exploratory analyses without adjusting multiple comparisons

† Kaplan-Meier estimate

Approximately 75% of patients were re-consented for extended follow-up beyond 24 months. Observations with missing data were censored at the last date of assessment. This exploratory analysis suggests that the iDFS results at 5 years are consistent with the 2-year iDFS results observed in ExteNET. After a median follow-up of 8 years, there was no statistically significant difference in OS between the NERLYNX arm and the placebo arm [HR 0.95 (95% CI: 0.75, 1.21)]. The 5-year estimate of OS was 94.1% (95% CI, 92.7%, 95.3%) in the NERLYNX arm and 93.3% (95% CI, 91.8%, 94.5%) in the placebo arm.

## 14.2 Advanced or Metastatic Breast Cancer

The safety and efficacy of NERLYNX in combination with capecitabine was studied in NALA (NCT01808573), a randomized, multicenter, open-label clinical trial in patients (n=621) with metastatic HER2 positive breast cancer who had received 2 or more prior anti-HER2 based regimens in the metastatic setting. HER2 expression was based on archival tissue tested at a central laboratory prior to enrollment. HER2 positivity was defined as a HER2 immunohistochemistry (IHC) score of 3+ or IHC 2+ with confirmatory in situ hybridization (ISH) positive. Fifty-nine percent of these patients were hormone receptor positive (HR+) and 41% were hormone receptor negative (HR-); 69% had received two prior anti-HER2 based regimens, 31% had received three or more prior anti-HER2 based regimens, 81% had visceral disease, and 19% had non-visceral-only disease. Patients with asymptomatic or stable brain metastases were included in NALA trial (16%).

Patients were randomized (1:1) to receive NERLYNX 240 mg orally once daily on Days 1–21 in combination with capecitabine 750 mg/m<sup>2</sup> given orally twice daily on Days 1–14 for each 21-day cycle (n=307) or lapatinib 1250 mg orally once daily Days 1–21 in combination with capecitabine 1000 mg/m<sup>2</sup> given orally twice daily on

Days 1–14 for each 21-day cycle (n=314). Patients were treated until disease progression or unacceptable toxicity.

The efficacy results from the NALA trial are summarized in Table 13, Figure 2, and Figure 3.

**Table 13. Efficacy Results – NALA Trial (Central Assessment)**

	<b>NERLYNX + Capecitabine (n=307)</b>	<b>Lapatinib + Capecitabine (n=314)</b>
<b>Progression-Free Survival (PFS)</b>		
Number of Events (%)	210 (68.4)	223 (71.0)
Median PFS, months (95% CI)	5.6 (4.9, 6.9)	5.5 (4.3, 5.6)
HR (95% CI)*	0.76 (0.63,0.93)	
p-value†	0.0059	
PFS Rates at 12 Months, % (95% CI)	29 (23, 35)	15 (10, 20)
PFS Rates at 24 Months, % (95% CI)‡	12 (7, 18)	3 (1, 8)
<b>Overall Survival (OS)</b>		
Number of Events (%)	192 (62.5)	218 (69.4)
Median OS, months (95% CI)	21.0 (17.7, 23.8)	18.7 (15.5, 21.2)
HR (95% CI)*	0.88 (0.72, 1.07)	
p-value†	0.2086	
<b>Objective Response Rate (ORR)§</b>		
ORR, % (95% CI)	32.8 (27.1, 38.9)	26.7 (21.5, 32.4)
<b>Duration of Response (DOR)</b>		
Median DOR, months (95% CI)	8.5 (5.6, 11.2)	5.6 (4.2, 6.4)

HR=Hazard Ratio

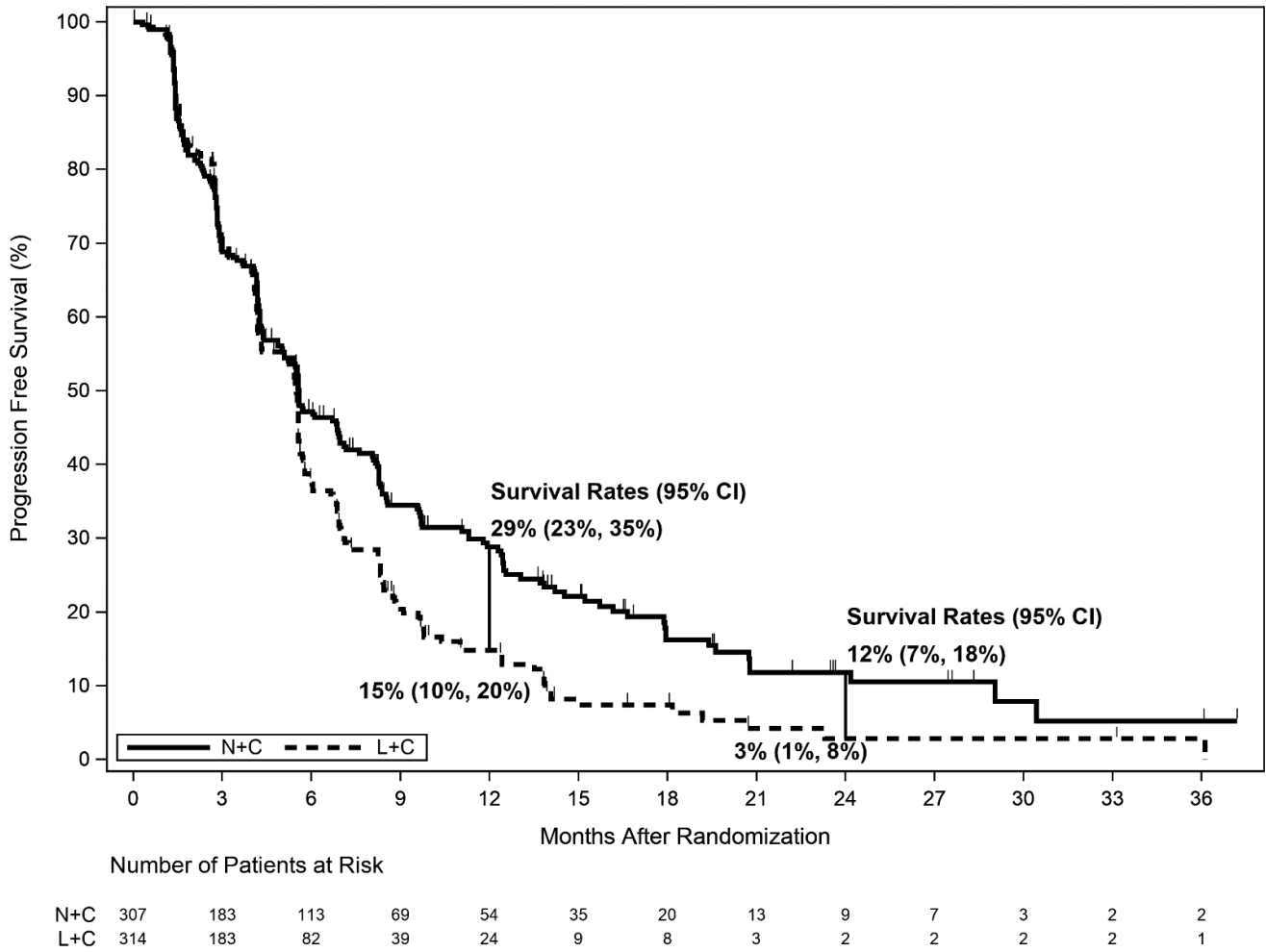
\* Hazard ratio is presented as NERLYNX plus Capecitabine (N+C) vs Lapatinib plus Capecitabine (L+C).

† Stratified log-rank test

‡ The total number of patients remaining on study at 24 months is 11; with 9 patients on N+C and 2 patients on L+C.

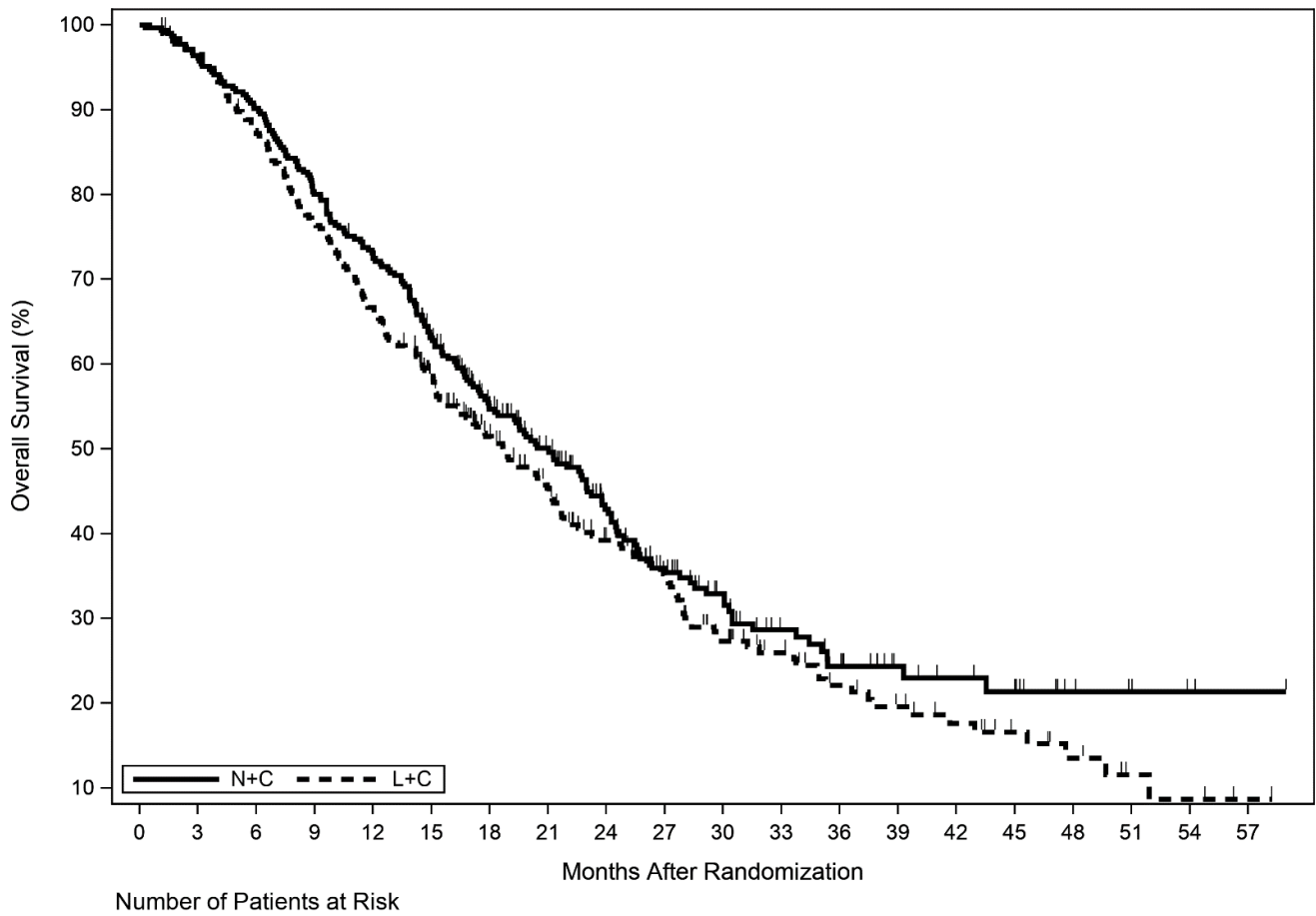
§ Confirmed ORR in patients with measurable disease at screening (256 in the N+C arm and 270 in the L+C arm)

**Figure 2. Progression-Free Survival (Central Assessment - ITT Population)**



CI=Confidence Interval; ITT=Intent to Treat; L+C=Lapatinib plus Capecitabine; N+C=NERLYNX plus Capecitabine

**Figure 3. Overall Survival (ITT Population)**



N+C 307 294 275 244 220 182 142 112 82 64 47 34 28 18 15 13 6 4 2 1  
 L+C 314 303 273 240 208 170 132 107 84 67 47 36 27 22 17 12 8 4 3 1

ITT=Intent to Treat; L+C=Lapatinib plus Capecitabine; N+C=NERLYNX plus Capecitabine

**Table 14. Progression-Free Survival Rates - Subgroup Analyses<sup>a</sup>**

Population	Number of Events/Total N (%)		PFS Rates (%) at 12 Months (95% CI)	
	NERLYNX + Capecitabine	Lapatinib + Capecitabine	NERLYNX + Capecitabine	Lapatinib + Capecitabine
<b>Disease Location</b>				
Visceral	181/247 (73.3)	185/253 (73.1)	23 (17, 30)	14 (10, 20)
Non-Visceral	29/60 (48.3)	38/61 (62.3)	53 (38, 66)	18 (7, 32)
<b>Hormone Receptor Status</b>				
Positive	128/181 (70.7)	115/186 (61.8)	27 (19, 34)	23 (15, 31)
Negative	82/126 (65.1)	108/128 (84.4)	32 (23, 41)	5 (2, 11)
<b>Previous HER2 Regimens</b>				
2 Regimens	148/215 (68.8)	151/215 (70.2)	26 (20, 33)	13 (8, 19)
≥3 Regimens	62/92 (67.4)	72/99 (72.7)	34 (24, 45)	19 (11, 29)

CI=Confidence Interval; PFS=Progression-Free Survival

<sup>a</sup> Exploratory Analysis

## 16 HOW SUPPLIED/STORAGE AND HANDLING

NERLYNX 40 mg film-coated tablets are red, oval shaped and debossed with 'W104' on one side and plain on the other side.

NERLYNX is available in:

Bottles of 180 tablets: NDC 70437-240-18

Bottles of 133 tablets: NDC 70437-240-33

Bottles of 126 tablets: NDC 70437-240-26

Store at controlled room temperature, 20°C to 25°C (68°F to 77°F); excursions permitted to 15°C to 30°C (59°F to 86°F) [*see USP Controlled Room Temperature*].

## 17 PATIENT COUNSELING INFORMATION

*Advise the patient to read the FDA-approved patient labeling (Patient Information).*

### Diarrhea

- Inform patients that NERLYNX has been associated with diarrhea, which may be severe in some cases.
- When not using dose escalation, instruct patients to initiate antidiarrheal prophylaxis with the first dose of NERLYNX.
- When using dose escalation, instruct patients to initiate 2 weeks of lower dose NERLYNX prior to receiving the recommended full dose of NERLYNX.
- Instruct patients to maintain 1–2 bowel movements per day and on how to use antidiarrheal treatment regimens.
- Advise patients to inform their healthcare provider immediately if severe ( $\geq$ Grade 3) diarrhea or diarrhea associated with weakness, dizziness, or fever occurs during treatment with NERLYNX [*see Dosage and Administration (2.1, 2.2) and Warnings and Precautions (5.1)*].

### Hepatotoxicity

- Inform patients that NERLYNX has been associated with hepatotoxicity which may be severe in some cases.
- Inform patients that they should report signs and symptoms of liver dysfunction to their healthcare provider immediately [*see Warnings and Precautions (5.2)*].

### Embryo-Fetal Toxicity

- Advise females to inform their healthcare provider if they are pregnant or become pregnant. Inform female patients of the risk to a fetus and potential loss of the pregnancy [*see Use in Specific Populations (8.1)*].
- Advise females of reproductive potential to use effective contraception during treatment and for 1 month after receiving the last dose of NERLYNX [*see Warnings and Precautions (5.3) and Use in Specific Populations (8.1, 8.3)*].
- Advise lactating women not to breastfeed during treatment with NERLYNX and for at least 1 month after the last dose [*see Use in Specific Populations (8.2)*].

## Drug Interactions

- NERLYNX may interact with many drugs; therefore, advise patients to report to their healthcare provider the use of any other prescription or nonprescription medication or herbal products [*see Dosage and Administration (2.5) and Clinical Pharmacology (12.3)*].
- NERLYNX may interact with gastric acid reducing agents. Advise patients to avoid concomitant use of proton pump inhibitors. When patients require gastric acid reducing agents, use an H<sub>2</sub>-receptor antagonist or antacid. Advise patients to separate the dosing of NERLYNX by 3 hours after antacid medicine, and to take NERLYNX at least 2 hours before or 10 hours after a H<sub>2</sub>-receptor antagonist [*see Dosage and Administration (2.5) and Drug Interactions (7.1)*].
- NERLYNX may interact with grapefruit. Advise patients to avoid taking NERLYNX with grapefruit products [*see Drug Interactions (7.1)*].

## Dosing and Administration

- For patients undergoing extended adjuvant treatment for early-stage breast cancer, instruct patients to take NERLYNX with food at approximately the same time each day consecutively until disease recurrence or for up to one year.
- For patients undergoing treatment for metastatic breast cancer, instruct patients to take NERLYNX with food on days 1–21 of a 21-day cycle, with capecitabine on Days 1–14 of a 21-day cycle until disease progression or unacceptable toxicities.
- If a patient misses a dose, instruct the patient not to replace the missed dose, and to resume NERLYNX with the next scheduled daily dose [*see Dosage and Administration (2.2)*].

Manufactured for Puma Biotechnology, Inc.  
10880 Wilshire Blvd., Suite 2150  
Los Angeles, CA 90024-4106

©2022, Puma Biotechnology, Inc. All Rights Reserved.

## PATIENT INFORMATION

### NERLYNX® (ner links)

(neratinib)  
tablets

#### What is the most important information I should know about NERLYNX?

##### NERLYNX may cause serious side effects, including:

- **Diarrhea.** Diarrhea is a common side effect of NERLYNX, but it can also be severe. Diarrhea may lead to loss of too much body salts and fluid, which can cause dehydration.

Your healthcare provider will prescribe NERLYNX in one of two ways to help manage diarrhea:

##### Full dose of NERLYNX:

- Your healthcare provider will prescribe the antidiarrheal medicine loperamide for you during your first 2 months (56 days) of treatment with NERLYNX and then as needed. Your healthcare provider will tell you exactly how much and how often to take this medicine.
- If you are prescribed the full dose of NERLYNX from the start of your treatment, be sure that your healthcare provider also prescribes antidiarrheals with NERLYNX. You should start taking loperamide with your first dose of NERLYNX.
- After 2 months (56 days) of treatment with NERLYNX, follow your healthcare provider's instructions about taking loperamide as needed to control diarrhea.

##### A lower starting dose of NERLYNX:

- Your healthcare provider will start you on a lower dose of NERLYNX for the first 2 weeks of treatment and then increase you to a full dose NERLYNX regimen. Tell your healthcare provider right away if you develop diarrhea. You may be prescribed loperamide as needed.

##### To help prevent or reduce diarrhea during treatment with NERLYNX:

- Your healthcare provider may also need to give you additional antidiarrheals, fluids, and electrolytes to manage diarrhea when you start treatment with NERLYNX. Follow your healthcare provider's instructions on how to take antidiarrheal medicines.
- Always take antidiarrheals exactly as your healthcare provider tells you.
- While taking antidiarrheals, you and your healthcare provider should try to keep the number of bowel movements that you have at 1 or 2 bowel movements each day.
- Tell your healthcare provider if you have more than 2 bowel movements in 1 day, or you have diarrhea that does not go away.
- **Call your healthcare provider right away if you have severe diarrhea or if you have diarrhea along with weakness, dizziness, or fever.**

Your healthcare provider may change your dose of NERLYNX, temporarily stop, or completely stop NERLYNX if needed to manage your diarrhea.

See "**What are the possible side effects of NERLYNX?**" for more information about side effects.

#### What is NERLYNX?

- NERLYNX is a prescription medicine used alone to treat adults with early-stage human epidermal growth factor receptor 2 (HER2)-positive breast cancer **and** who have previously been treated with trastuzumab-based therapy.
- NERLYNX is also used with a medicine called capecitabine to treat adults with HER2-positive breast cancer that has spread to other parts of the body (metastatic) **and** who have received 2 or more anti-HER2 therapy medicines for metastatic breast cancer.

It is not known if NERLYNX is safe and effective in children.

#### Before taking NERLYNX, tell your healthcare provider about all of your medical conditions, including if you:

- have liver problems. You may need a lower dose of NERLYNX.
- are pregnant or plan to become pregnant. NERLYNX can harm your unborn baby. If you are a female who can become pregnant:
  - Your healthcare provider should do a pregnancy test before you start taking NERLYNX.
  - You should use effective birth control (contraception) during treatment and for at least 1 month after your last dose of NERLYNX.
  - Talk with your healthcare provider about forms of birth control that you can use during this time.
  - Tell your healthcare provider right away if you become pregnant during treatment with NERLYNX.
  - Males with female partners who can become pregnant should use effective birth control during treatment and for 3 months after the last dose of NERLYNX.
- are breastfeeding or plan to breastfeed. It is not known if NERLYNX passes into your breast milk. Do not breastfeed during treatment and for at least 1 month after your last dose of NERLYNX.

**Tell your healthcare provider about all the medicines you take**, including prescription and over-the-counter medicines, vitamins, and herbal supplements.

**Especially tell your healthcare provider if** you take medicines used to decrease stomach acid, called proton pump inhibitors or PPIs. You should avoid taking these medicines during treatment with NERLYNX.

#### **How should I take NERLYNX?**

- Take NERLYNX exactly as your healthcare provider tells you to take it.
- Your healthcare provider may change your dose of NERLYNX if needed.
- Take NERLYNX with food.
- Take NERLYNX at about the same time each day.
- Swallow NERLYNX tablets whole. Do not chew, crush, or split NERLYNX tablets.
- If you take an antacid medicine, take NERLYNX 3 hours after the antacid medicine.
- If you take an acid reducer (H<sub>2</sub> receptor blocker), NERLYNX should be taken at least 2 hours before or 10 hours after you take these medicines.
- If you miss a dose of NERLYNX, skip that dose and take your next dose at your regular scheduled time.
- If you take too much NERLYNX, call your healthcare provider right away or go to the nearest hospital emergency room.

#### **What should I avoid while taking NERLYNX?**

You should avoid eating products that contain grapefruit during treatment with NERLYNX.

#### **What are the possible side effects of NERLYNX?**

**NERLYNX may cause serious side effects, including:**

**See “What is the most important information I should know about NERLYNX?”**

- **Liver problems.** Changes in liver function tests are common with NERLYNX. Your healthcare provider should do blood tests before you begin treatment, monthly during the first 3 months, and then every 3 months as needed during treatment with NERLYNX. Your healthcare provider will stop your treatment with NERLYNX if your liver tests show severe problems. Call your healthcare provider right away if you get any of the following signs or symptoms of liver problems:
  - tiredness
  - nausea
  - vomiting
  - pain in the right upper stomach-area (abdomen)
  - fever
  - rash
  - itching
  - yellowing of your skin or whites of your eyes

**The most common side effects** of NERLYNX when used alone include:

- diarrhea
- nausea
- stomach-area (abdomen) pain
- tiredness
- vomiting
- rash
- dry or inflamed mouth, or mouth sores
- decreased appetite
- muscle spasms
- upset stomach
- nail problems including color change
- dry skin
- swelling of your stomach-area
- nosebleed
- weight loss
- urinary tract infection

**The most common side effects** of NERLYNX when used with capecitabine include:

- diarrhea
- nausea
- vomiting
- decreased appetite
- constipation
- tiredness/weakness
- weight loss
- dizziness
- back pain
- joint pain
- urinary tract infection
- upper respiratory tract infection
- swelling of your stomach-area
- kidney problems
- muscle spasms

These are not all of the possible side effects of NERLYNX. For more information, ask your healthcare provider.

Tell your healthcare provider if you have any side effects that bother you or that does not go away.

Call your doctor for medical advice about side effects. You may report side effects to FDA at 1-800-FDA-1088.

#### **How should I store NERLYNX?**

- Store NERLYNX at room temperature between 68°F to 77°F (20°C to 25°C).

**Keep NERLYNX and all medicines out of the reach of children.**



**General information about the safe and effective use of NERLYNX.**

Medicines are sometimes prescribed for purposes other than those listed in a Patient Information leaflet. Do not use NERLYNX for a condition for which it was not prescribed. Do not give NERLYNX to other people, even if they have the same symptoms that you have. It may harm them. You can ask your pharmacist or healthcare provider for information about NERLYNX that is written for health professionals.

**What are the ingredients in NERLYNX?**

**Active ingredient:** neratinib

**Inactive ingredients:** Tablet Core: colloidal silicon dioxide, mannitol, microcrystalline cellulose, crospovidone, povidone, magnesium stearate, and purified water. Coating: red film coat: polyvinyl alcohol, titanium dioxide, polyethylene glycol, talc, and iron oxide red.

Manufactured for: Puma Biotechnology, Inc. 10880 Wilshire Blvd., Suite 2150 Los Angeles, CA 90024-4106

©2022, Puma Biotechnology, Inc. All rights reserved.

For more information, go to [www.NERLYNX.com](http://www.NERLYNX.com) or call 1-844-637-5969.

This Patient Information has been approved by the U.S. Food and Drug Administration.

PRC- US-NER-3043

Revised: 03/2022